

## A Landmark in Myanmar Petroleum Geoscience

### Editorial Team

The month of May 2026 marked a quiet but historic moment for MPRL E&P and for Myanmar geological science. After more than three years of sustained effort, a paper authored almost entirely by MPRL E&P's own geoscientists has been published in the Bulletin of the American Association of Petroleum Geologists (AAPG). For a company rooted in Myanmar, staffed predominantly by Myanmar nationals, this is no small thing. It is, in the truest sense, a first.

### What Was Published — and Why It Matters

The paper is entitled "Western offshore Myanmar: New insights on the Ayeyarwady River as the fairway for Pliocene-Pleistocene sandstone." In plain terms, it answers a question that had puzzled geoscientists for a few years: where did the reservoir sands of Block A-6 — the sands that now hold the gas of the Pyitharyar Integrated Project — come from?

The answer, which the team proved through a thorough combination of seismic interpretation, well data, petrography, heavy-mineral analysis, and cutting-edge U-Pb zircon age dating, is that these sands were delivered by an ancient arm of the Ayeyarwady-Chindwin River system. For at least five million years, this great river flowed westward through a breach in the unstable continental slope of Block A-6, depositing what the team now calls the Western Ayeyarwady Fan — the very fairway that hosts our gas discoveries. Less than a million years ago, tectonic forces redirected that ancient river course southward to where it flows today, leaving behind the sands that MPRL E&P's exploration wells would one day find.

It is a discovery that rewrites the understood geology of western offshore Myanmar.

Page 7 ➤

**Editor's Note:** Historical geological literature cited in this article frequently uses the spelling "Irrawaddy," whereas modern Myanmar government publications and many contemporary scientific references use "Ayeyarwady." Both terms refer to the same river and are used interchangeably in this article where appropriate to preserve the original context of referenced sources.

**Disclaimer:** This paper reflects only the ideas, thoughts and opinions of the author and does not represent in any way the mainstream ideas, thoughts or opinions on the matter of this snippet, or ideas, thoughts, or opinions of MPRL E&P Group of Companies. The author is also sorry for possibly upsetting the MPRL E&P's Geoscience Team, however they should rest assured that is only a seed of speculative geo-poetry, just to excite a wave of inquisitiveness, a modest paving stone in the quagmire of intricacies of the tertiary geology of Myanmar.

**Acknowledgment:** My wholehearted gratitude goes to Geoscience Team Geologist U Kyaw Naing Oo for producing the elevation maps that tell quite a few stories of old landscapes.

### Introduction

More than a century ago, Professor Laurence Dudley-Stamp started his paper on "An Outline of the Tertiary Geology of Burma" with a stern grumble.

*"For more than a quarter of a century, the Tertiary geology of Burma has been the subject of investigation for the point of view of the petroleum resources of the country. A vast amount of detailed information must be stored up in the private files of the various oil companies operating in Burma, and it is a source of continual regret to the geologist that at least some of this information - much of which has great scientific but little commercial value - cannot be made public."*

The paper was published in the London Geological Magazine, the most authoritative journal in geology at the time, in November 1922.

More than a century later, MPRL E&P's geoscientists are proud to have somewhat redeemed L. Dudley-Stamp's predicament in a paper entitled "Western offshore Myanmar: New insights on the Ayeyarwady River as the fairway for Pliocene-Pleistocene sandstone". This paper, more than three years in the making, has been published in the May 2026 issue of the Bulletin of the American Association of Petroleum Geologists (the "AAPG"). The AAPG, the largest association in the world in the trade of petroleum geology, counts about 35,000 members in some 130 countries. Its prestigious bulletin is issued monthly since 1917.

Page 24 ➤

## Vagrant Rivers Shaping Landscapes

Old Geo-Geezer (OGG)



## More Stories

Supporting a Healthier Workplace Through Seasonal Flu Vaccination

News 4 ➤

MPRL E&P Supports Education and Youth Development at the School Library Development and Reading Promotion Festival

Feature 8 ➤

A Summer of Colors, Skills and New Opportunities

Photo Essay 10 ➤

MPRL E&P and M&AOSB Mark World Environment Day Through Community Climate Action

Feature 12 ➤

Empowering Myanmar's Future Energy Professionals

Feature 20 ➤

Building Trust Through Integrity and Continuous Learning

Employee Spotlight 22 ➤

A Partnership Built on Trust and Reliability

In the Group 28 ➤

Summer Sea Training Camp 2026 Strengthens Skills and Sailing Excellence

Events 32 ➤

# Insight!

Insight! is owned by MPRL E&P Pte Ltd. The title Insight! in English, its associated logos and the contents of this publication may not be reproduced in whole or in part without the written consent of MPRL E&P Pte Ltd.

#### Editor

Hnin Wynt Zaw  
hnin.w.zaw@mprlexp.com

#### Assistant Editors

Thal Sandy Tun  
thal.s.tun@mprlexp.com

Pyae Pyae Phyoo  
pyae.p.phyoo@mprlexp.com

#### Layout Design

Win Htun Aung, Design Team  
win.t.aung@mprlexp.com

MPRL E&P Pte Ltd.  
CSR & Communications Department

623 Pyay Road, Kamayut Township  
11041 Yangon, Union of Myanmar  
Tel : (95-1) 230 7733  
Fax : (95-1) 230 7744  
LinkedIn : myanmar\_mprlexp  
Email : mprlstaff@mprlexp.com  
Website : www.mprlexp.com



## From the Desk of the Editor

Dear Readers,

As we reach the midpoint of 2026, the world continues to navigate a rapidly evolving landscape shaped by economic uncertainty, technological advancement, energy transition discussions, and shifting global supply chains. Across Asia, the oil and gas sector remains influenced by market volatility, changing energy demand patterns, evolving regulatory environments, and the need to balance energy security, affordability, and sustainability. While these challenges persist, they also create opportunities for innovation, collaboration, and long-term resilience. Against this backdrop, this issue of *Insight!* highlights the people, ideas, and initiatives that continue to strengthen our organization and the communities around us.

This issue showcases the many ways MPRL E&P continues to create value through its people, operations and community partnerships. Alongside inspiring employee stories that reflect dedication, growth and professional excellence, we feature initiatives that demonstrate our commitment to sustainable development and social responsibility.

A key focus of this issue is the impact of our CSR programs across the regions where we operate. In the Ayeyarwady Region, the Coral Revive Project continues to advance marine ecosystem conservation through the restoration of coral reefs while promoting community participation and sustainable development. In Mann Field Communities, Summer Program 2026 transformed the traditional school break into a season of learning, creativity and personal growth for children, youth and women through educational and skills-building activities.

Environmental stewardship also remains a priority. This issue highlights our World Environment Day 2026 activities, where more than 200 community members participated in climate awareness discussions, reinforcing the importance of environmental responsibility and sustainable living. We also feature the launch of our Soil Enhancement Program, which brought together approximately 250 farmers to learn about soil health, sustainable fertilizer alternatives, and climate-smart agricultural

practices as part of a year-long capacity-building initiative.

A particularly proud milestone this year has been the publication of a technical paper by members of MPRL E&P's Myanmar Geoscience Team in the May 2026 edition of the AAPG Bulletin, one of the petroleum industry's most respected scientific journals. This achievement reflects not only the team's technical expertise and dedication, but also the growing contribution of Myanmar geoscientists to the global scientific and energy community. For many years, Myanmar has been home to talented geoscientists whose work has advanced the understanding of the country's petroleum systems and natural resources. Seeing the work of our local professionals recognized through an international publication is a source of pride for both the company and the wider Myanmar geoscience community. It underscores the importance of research, knowledge sharing and scientific collaboration while demonstrating that expertise developed in Myanmar can contribute meaningfully to global industry discussions.

On behalf of the Editorial Team, I would like to extend our sincere congratulations to the authors and everyone involved in this accomplishment. Their dedication, perseverance, and commitment to technical excellence serve as an inspiration to future generations of Myanmar geoscientists and professionals across our organization.

As always, *Insight!* exists because of the people who contribute their stories, experiences, expertise and perspectives. Whether through technical achievements, community initiatives, professional growth, or personal reflections, every contribution helps strengthen the culture of learning and collaboration that defines our organization.

We hope you enjoy this issue and find inspiration in the stories of the colleagues, communities and initiatives featured within these pages. ■

Happy reading!

Hnin W. Zaw

## Myanmar Surfers Earn Podium Finishes at the 2026 Matalay Khaolak Classic

Hnin Wynt Zaw

Members of the Surf Association of Myanmar (SAM) delivered strong performances at the 2026 Matalay Khaolak Classic, held from 01 to 03 June at Memories Beach in Khao Lak, Thailand.

Competing against surfers from across the region, Aung Min Thant secured a silver medal in the Beginner Men division, finishing just 0.31 points behind the winner. In the Open Men division, Min Myat Thu earned a bronze medal, marking another podium finish for Myanmar.



The athletes' success reflects the continued efforts of the Surf Association of Myanmar, led by President Phone Kyaw Moe Myint, to develop the sport and create opportunities for Myanmar surfers to gain international exposure. Through regional partnerships, training initiatives and participation in international competitions, SAM continues to promote the growth of surfing in Myanmar while showcasing local talent on the regional stage. ■

# Your Opinion: Working Smarter With AI



**Daw Thin Thandar Win**  
Assistant Engineer  
Pyitharyar Integrated Project

Artificial Intelligence (AI) is no longer a future concept; it is an active workplace reality. While debates often split between celebrating AI's efficiency and fearing its impact on human thinking and creativity, history shows that every major technological shift sparks similar anxieties.

Rather than fearing replacement, the smart choice for organizations today is learning to work alongside these tools.

Embracing this partnership requires a shift in mindset. The question changes from "How do I do this manually?" to "How can I prompt AI to help me do this better?" Approached this way, AI becomes an around-the-clock digital support partner. Hours spent digging through datasets, organizing messy research, or drafting initial reports can be offloaded, transforming AI into a brainstorming partner and rapid document generator.

In my role as an Assistant Engineer in offshore field development, this collaborative approach delivers tangible results. Technically, AI helps me analyze complex data and map out engineering concepts. Administratively, AI-powered tools transcribe and summarize project meetings in real time, ensuring accurate decisions and action items. It allows me to focus entirely on the engineering discussion rather than note-taking, supporting smoother project delivery. Beyond daily operations, I use AI as a personalized tutor for professional development. Through real-world scenarios and role-play exercises, I safely practice project management, soft skills, and languages, using instant feedback to bridge the gap between theory and practice.

Looking ahead, AI's potential is significant. In daily operations, it can handle end-to-end administration, triage communications, and sync financial platforms. Technically, I foresee AI analyzing historical data to predict engineering roadblocks and delays before happening. Navigating this transition brings cautious optimism, but our organization's open attitude channels anxiety into empowerment. To ensure everyone benefits, we must prioritize AI literacy across the workforce. Training teams to ask the right questions and write effective prompts reduces the learning curve. However, we must remember that AI can make mistakes. Our human knowledge, technical expertise, and critical thinking remain the final safeguards. The future of work belongs to the people who know how to guide AI while relying on their own judgment to verify the results. ■



**U Pyae Phyong Paing**  
Assistant Engineer  
Pyitharyar Integrated Project

Not long ago, Artificial Intelligence (AI) felt like something we would deal with someday. Now, it has quietly become part of our everyday workflow. From drafting emails to organizing information and shaping ideas, AI is no longer just a concept. It feels like a behind-the-scenes partner that supports how we work and helps us move through tasks with greater clarity.

I first noticed its impact in small but repetitive tasks. Structuring documents, refining wording, and improving presentations used to take a significant amount of time and energy. With AI, these steps became faster and more manageable. Instead of focusing on formatting or finding the right words, I can focus more on the message, coordination, and decision-making. The work feels less rushed, more structured, and more intentional. AI also supports learning, improves collaboration, and helps employees work more efficiently. By combining technology with human judgment, organizations can create smarter, more innovative, and productive workplace environments for the future.

One meaningful example was translating the CEO's biography, Moe Myint: The Faith to Build, The Heart to Serve, from Myanmar to English. AI helped accelerate the initial translation process and provided a strong starting point. However, the final result was checked and refined by the team. We carefully reviewed each translated section thoroughly to ensure it made sense, maintained a consistent tone, and reflected the overall theme or message, voice, and professionalism that we wanted to portray.

AI supported the process, as translating from Myanmar language to English can be both very time-consuming and daunting, but with AI, we were able to save a lot of time, especially while working under a tight timeline. That said, my advice would be not to wholeheartedly trust every result provided by AI and the human touch is always essential.

Looking ahead, AI has the potential to enhance not only individual productivity but also how teams work together. Better insights, faster information processing, and support for routine tasks can help us move toward more proactive and strategic ways of working. As we continue this shift, an important question remains: Are we using AI simply to move faster, or are we using it to think better? The answer may shape not only how we work, but who we become in an AI-driven future. ■



## NSYC Supports Bugwe Students with Educational Supplies

Pyae Pyae Phyong



On 16 June 2026, Ngwe Saung Yacht Club & Resort (NSYC) donated educational supplies to students at the Basic Education Middle School in Bugwe Village, Ngwe Saung Township, as part of its CSR Program. The donation benefited a total of 239 students, including 184 primary-level students and 55 middle school students. Essential learning materials such as books, pencils, and rulers were provided

to help support the students' educational needs and academic development.

For the initiative, NSYC contributed MMK 1,587,200 through its CSR Fund, while NSYC employees collectively donated MMK 512,000. The total value of the donation amounted to MMK 2,099,200.



This contribution reflects NSYC's ongoing commitment to supporting education and fostering community development through its CSR initiatives, helping create a positive impact for local students and their communities. ■

# Supporting a Healthier Workplace Through Seasonal Flu Vaccination

Nay Kyaw Hein



Seasonal influenza (flu) remains one of the most common infectious illnesses affecting communities every year, particularly during seasonal changes and the monsoon period. To strengthen workforce health protection and reduce operational disruptions, the HSE Department organized a Seasonal Flu Vaccination Program for employees and their family members as part of its preventive health and wellness initiative.

## Why Flu Vaccination Matters

Influenza is a highly contagious respiratory infection that spreads primarily through coughing, sneezing and close contact with infected individuals. Although many cases are mild and self-limiting, influenza can lead to serious illness and complications, particularly among vulnerable groups such as older adults, individuals with underlying medical conditions and those with weakened immune systems.

Public health authorities, including the World Health Organization, continue to recommend annual flu vaccination as the most effective preventive measure for reducing the risk of infection, minimize complications and limiting the spread of influenza within communities and workplaces. Vaccination not only protects individuals but also contributes to a healthier and more resilient workforce.

## Management's Commitment to Employee Health and Wellbeing

As part of Management's ongoing commitment to employee health, safety and wellbeing, the Seasonal Flu Vaccination Program was successfully completed at the Vantage Tower ahead of the monsoon season. Recognizing the increased risk of seasonal influenza and other respiratory illnesses during this period, the HSE Team proactively led the planning, evaluation and coordination of the vaccination campaign under the guidance and support of Management.

The initiative was designed to enhance workforce health protection, reduce the likelihood of flu-related illness and absenteeism, and support business continuity through a proactive occupational health approach. Following a comprehensive evaluation of medical service providers, quotations and supporting documentation, the HSE Team coordinated the vaccination program to ensure compliance with applicable regulatory requirements and recognized health standards.

## Successful Vaccination Campaign

The vaccination campaign achieved strong participation from employees and their family members.



- 101 employees and family members received their seasonal flu vaccination at the Vantage Tower.
- 42 employees and family members received their vaccination at the SML Clinic.

In total, 143 employees and family members participated in the program, demonstrating a strong engagement and commitment to preventive health care and personal wellbeing.

## Building a Healthier and More Resilient Workforce

The successful completion of the program reflects Management's commitment to preventive health care and its continued focus on protecting the well-being of employees and their families. It also highlights the collective efforts of Management, the HSE Team, medical service providers and participants who contributed to the campaign's success.

The HSE Team extends its sincere appreciation to everyone who supported and participated in this important initiative. Through proactive measures such as seasonal flu vaccination, we continue to strengthen our culture of care, promote workforce resilience and foster a healthier, safer and more productive workplace for all. ■

# A Milestone in Stewardship as MPRL E&P Navigates Challenges in its 12th Environmental Monitoring Report Submission

Han Myo Aung



Since its founding in 1996, MPRL E&P has remained a cornerstone of Myanmar's energy industry, guided by a culture of integrity, technical proficiency and a deep-seated commitment to ethical standards. This mission is clearly reflected in the company's 12th Environmental Monitoring Report, which provides a comprehensive account of environmental stewardship during the six-month period from October 2025 to March 2026. By prioritizing honesty and accountability, MPRL E&P continues to ensure that its operations not only meet technical goals, but also foster an empowering environment for its workforce and the communities it serves.

One of the key highlights during this reporting period was the collaborative field monitoring conducted alongside the regional Environmental Conservation Department at Mann Field in January 2026. These joint activities focused on verifying baseline conditions for air, noise and soil quality at key indicator points, providing essential data for

ongoing impact assessments. While prevailing logistical and security challenges required monitoring activities to be adapted to accessible points closest to the operational footprint, the company remains committed to re-establishing full-scale data collection once regional conditions stabilize.

Another important focus of the reporting period was the company's rigorous compliance with recommendations from the Environmental Conservation Department. In response to previous regulatory feedback, MPRL E&P conducted a benchmarking analysis of surface water analytical results against the latest National Surface Water Quality Standards.

The report also includes a detailed comparative analysis of current air, noise, soil and water quality data against the 2015 baseline datasets, demonstrating the company's proactive approach in addressing the ECD's specific comments through a comprehensive action matrix. ■

# MPRL E&P Reflects on FY 2025-2026 Performance and Sets Strategic Priorities for the Future

Noble Nay Win



MPRL E&P convened its Year-End Reflection Workshop for FY 2025-2026 on 05 June 2026 at Vantage Tower, bringing together leadership and department representatives to review achievements, share lessons learned and align on priorities for the coming fiscal year.

The workshop served as an important platform for reflection, enabling teams to evaluate operational performance, identify areas for improvement and strengthen cross-functional collaboration. Through open discussions, participants examined key business outcomes and explored practical strategies to enhance resilience, efficiency and long-term sustainability.

Throughout the day, departments presented updates covering field operations, technical management, subsurface and reservoir engineering, project development, finance, social performance, human



resources, health, safety and environment (HSE), administration, supply chain and compliance. Highlights included continued production optimization initiatives, progress in waterflood development, successful execution of community investment programs, strong safety performance with zero lost-time accidents (LTA) and advancements in project development and organizational capability building.

Discussions also focused on challenges experienced during the year, including operational constraints, evolving market conditions, security considerations, and the broader resource and organi-

zational demands that shaped decision-making across the business. Participants emphasized the importance of proactive planning, stakeholder engagement, digitalization, knowledge sharing and the increased application of technology and AI tools to support business performance.

Looking ahead, MPRL E&P reaffirmed its commitment to sustainable production, operational excellence, workforce development, safety leadership, responsible social investment and the advancement of strategic growth opportunities. Agreed actions from the workshop will be incorporated into departmental plans for FY 2026-2027.

Closing the workshop, the Executive Vice President & Country Manager emphasized that continuous reflection, adaptability and teamwork remain essential to navigating challenges, creating long-term value for stakeholders and supporting the communities in which MPRL E&P operates. ■





# MPRL E&P Reaffirms 10 Years of UNGC Commitment in CoP 2026 Report

Thal Sandy Tun

MPRL E&P plans to submit its Communication on Progress (CoP) 2026 to the United Nations Global Compact (UNGC) during the CoP 2026 Universal Submission Period from 01 April to 31 July 2026. The submission includes the mandatory questionnaire, the Chief Executive's Statement of Continued Support and a standalone sustainability report, reaffirming the company's continued alignment with responsible and sustainable business practices.

Since becoming a UNGC signatory on 16 February 2016, the company has consistently aligned its operations and sustainability initiatives with the UNGC's Ten Principles covering human rights, labor, environment and anti-corruption. This year also marks the company's 10th anniversary as a participant of the United Nations Global Compact, reflecting a decade of commitment to ethical business conduct and responsible energy development.

The CoP 2026 highlights the company's efforts and achievements during the Myanmar Financial Year 2025–2026, a period shaped by global energy market volatility and the impacts of the 7.7 magnitude earthquake in central Myanmar. Despite these challenges, the company continued strengthening operational resilience, environmental stewardship, workplace safety and stakeholder engagement across its operations.

Key highlights from the reporting year include the treatment and reinjection of 6.7 million barrels of produced water in line with industry best practices, continued implementation of environmental management systems at Mann Field, and ongoing biodiversity and marine conservation initiatives



carried out in collaboration with stakeholders and local communities. The company also maintained strong occupational health and safety performance, achieving more than 5.4 million man-hours without a lost time accident.

The report further highlights the company's continued focus on workforce development, ethical business practices and organizational learning through the rollout of a revised Code of Conduct, cross-functional learning initiatives and the continuation of the AIT Scholarship Program. Community investment programs also continued to support access to clean water, healthcare, education, skills development and infrastructure in communities surrounding Mann Field.

Following the devastating earthquake that struck Myanmar on 28 March 2025, MPRL E&P mobilized

its Earthquake Relief Team to provide emergency humanitarian assistance and support recovery efforts in affected communities. These efforts reflected the company's ongoing commitment to social responsibility and community resilience during times of national hardship.

As we enter our tenth year with the UNGC, we remain focused on strengthening ESG integration, enhancing climate resilience, and contributing to the Sustainable Development Goals through responsible energy operations and collaborative partnerships.

We invite our stakeholders to review the CoP 2026 and share valuable feedback as we continue our sustainability journey together with the UNGC community and partners. ■

## Listening to Our People: Insights From the Staff Sustainability Survey

Thal Sandy Tun



As part of our ongoing commitment to embed sustainability into the core of our operations, we recently conducted a Staff Sustainability Survey across the organization. The survey was designed to better understand how our people perceive sustainability, how it connects to their day-to-day work, and where we can continue to strengthen awareness, engagement and impact.

The response reflects a growing recognition among staff that sustainability is not just a corporate initiative, but a shared responsibility. Across

functions, employees expressed a clear understanding of the importance of environmental stewardship, social responsibility and good governance in shaping the company's long-term success. Many highlighted pride in ongoing initiatives — from community development programs to operational improvements — demonstrating that sustainability is increasingly seen as part of who we are as an organization.

At the same time, the survey provided valuable insights into areas for further development. While awareness is strong, staff indicated a desire for clearer linkages between sustainability goals and their individual roles. There is also interest in more practical guidance, training opportunities and regular updates to better understand how their contributions align with broader company objectives. These insights reinforce the importance of translating strategy into everyday actions.

Encouragingly, the survey also revealed a high level of willingness among employees to be more actively involved. Many respondents expressed interest in participating in sustainability-related

activities, knowledge-sharing sessions, and cross-department initiatives. This signals an opportunity to build a more inclusive and participatory approach — one where sustainability is not only communicated, but co-created across the organization.

The findings will play an important role in shaping the next phase of our sustainability journey. Moving forward, efforts should focus on strengthening internal communication, enhancing capacity building and creating more platforms for staff engagement. By doing so, we can ensure that sustainability is not only understood at a strategic level, but is embedded in everyday decision-making and workplace culture.

Ultimately, the survey underscores a simple but powerful message: our people are at the heart of our sustainability progress. By listening, learning and responding to their perspectives, we can continue to build a more resilient, responsible and future-ready organization. ■

From Cover Page

**A Seed Planted Long Ago**

This story did not begin in a journal. It began in the field.

Nearly two decades ago, during MPRL E&P's earliest offshore exploration activities, our Geoscience Team undertook regional geological studies and field trips that planted the first seed of a bold hypothesis: that the sands of Block A-6 had been sourced from the east. At the time, it was little more than a well-reasoned conviction — held by a small group of geoscientists who looked at the data and trusted what they saw.

That group was led by U Ko Ko, now EVP and Country Manager of MPRL E&P; U Than Htut, formerly Chief Research Officer of MOGE and then a member of MPRL E&P's Geoscience Team; U Kyaw Myint, formerly Chief Geophysicist of MOGE and likewise, a valued member of our team and later Dr. Eloi Dolivo, now Exploration Manager of MPRL E&P - supported by the wider Geoscience Team who worked alongside them in the field and over regional maps in those foundational years, collectively nurturing a hypothesis that most of the industry had not yet imagined. The conviction endured, quietly, through the years that followed.



**Figure 1: A field trip lesson: "The present is a key to the past";** ripple marks are series of small parallel ridges of sand left by the action of waves or flowing rivers, whether today or long ago; you may admire those figures on the Chaungthar beach

What transformed it from conviction to science was data. Between 2011 and 2018, the acquisition of well data and 3D seismic surveys across the shallow to deepwater reaches of Block A-6 provided the hard evidence needed to move from speculation to solid science. The pieces fell into place.

**From Concept to Published Science: The Chief Executive's Role**

It was our Chief Executive U Moe Myint who, more than eight years ago, encouraged the Geoscience Team to go further — to move beyond internal studies and share this discovery with the world's scientific community. That encouragement was the catalyst.

The Team's first attempt came in 2020, with a submission to the Myanmar Association of Petroleum Geologists. Though that submission did not reach publication, it sharpened the team's thinking and deepened their resolve. They turned next to the AAPG — the world's largest petroleum geology association, with approximately 35,000 members across 130 countries, and a bulletin published monthly without interruption since 1917.

What followed was a rigorous three-year process: three full rounds of peer review by some of the world's leading petroleum geoscientists, including

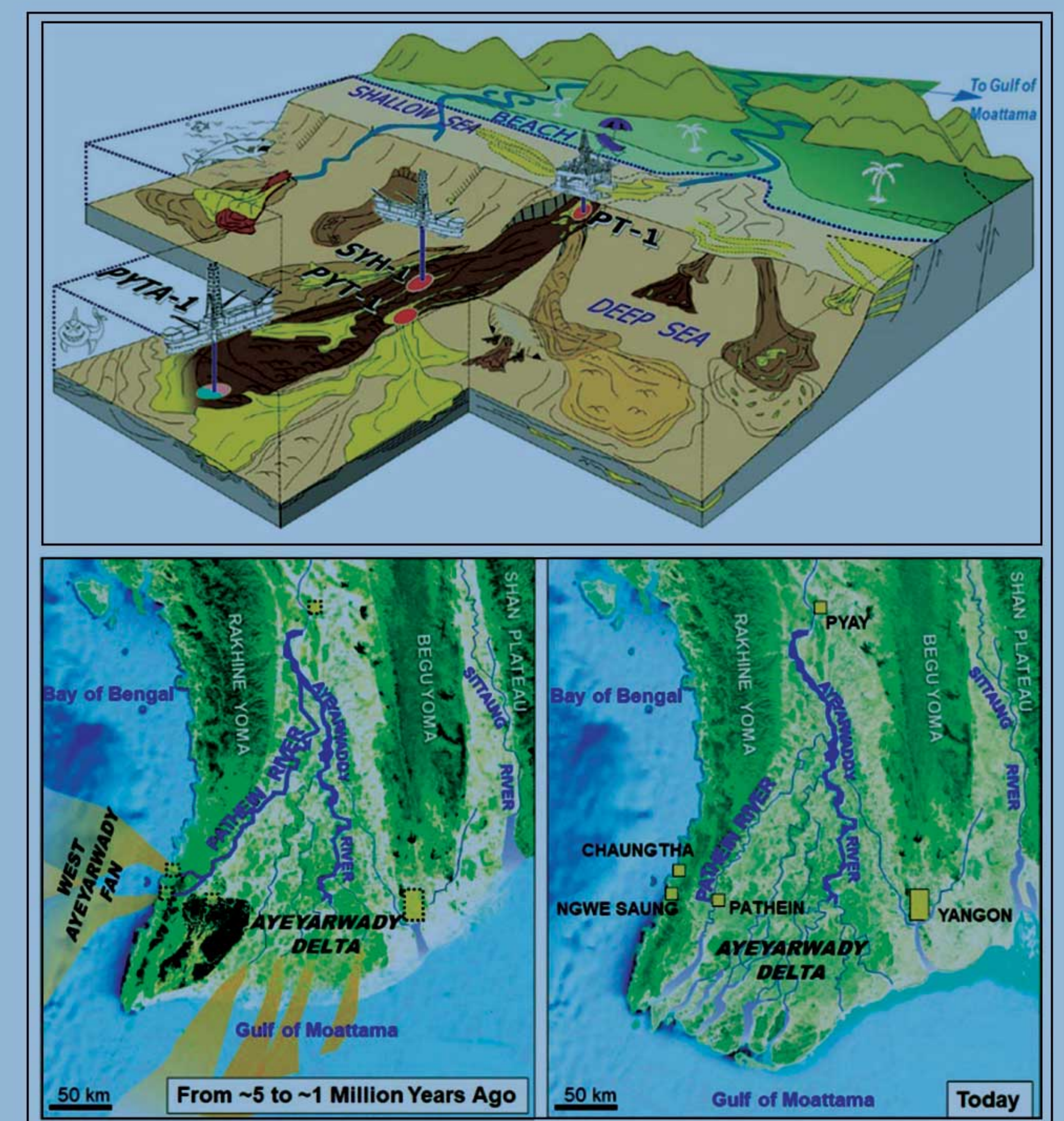
one quite familiar with the Myanmar geology, each round demanding deeper analysis, sharper arguments, and more robust evidence. The team met every challenge. The paper was finally accepted in December 2025 and published in the May 2026 issue of the AAPG Bulletin.

U Moe Myint's support was unwavering throughout. His father, Dr. P. Kyaw Myint, was himself a founding figure of Myanmar's geological institutions — a co-founder, with Dr. Ba Thi, of the Burma Geological Research Department (BGR) under the Ministry of Mines, the institution now known as the Department of Geological Survey and Mineral Exploration (Ba Da Ya). The publication of this paper carries a particular resonance in that lineage.

**The Team Behind the Paper**

Behind this landmark paper stands a team whose dedication, intellectual rigor, and quiet perseverance deserve to be celebrated by name. The paper's ten authors — U Kyaw Zin Oo, U Ko Ko, U Kyaw Soe Win, U Aung Zayar Myint, U Zaw Win Aung, Daw Su Mon Aye, U Thant Zin Aung, U Kyaw Naing Oo, Dr. Tin Tin Naing, and Dr. Eloi Dolivo — gave years of sustained effort to this work, all of them while carrying their full professional responsibilities at MPRL E&P. Nine of the ten are Myanmar citizens;

nine of the ten are from MPRL E&P. U Kyaw Zin Oo, who joined through the company's internship program and devoted eight years to building the evidence base, leads the author list — his name now permanently in a journal read by 35,000 petroleum geologists around the world. U Ko Ko's early regional fieldwork nearly two decades ago helped plant the first seed of the hypothesis this paper ultimately proved. U Kyaw Soe Win and U Aung Zayar Myint provided the sustained technical leadership that kept the project on course; U Zaw Win Aung and Daw Su Mon Aye brought their expertise in prospect maturation and seismic interpretation to the painstaking mapping of the reservoir fairway, translating seismic wiggles into old landscapes; U Thant Zin Aung's decade of petrophysics experience and U Kyaw Naing Oo's mastery of regional structural geology are woven throughout the analysis. The sole author outside MPRL E&P, Dr. Tin Tin Naing — a former MPRL E&P geologist who went on to a research fellowship at the Zurich Swiss Federal Institute of Technology, a Ph.D. from the University of Oxford, and a postdoctoral position at Oxford's Department of Earth Sciences — is a proud testament to the caliber of geoscientists that Myanmar and this company produce. And anchoring the entire endeavor was Dr. Eloi Dolivo, Ph.D. from the University of Lausanne (Switzerland), Exploration Manager and a team's mentor, whose 45 years of



**Figure 2: What our AAPG paper showed;** a snapshot of the Ayeyarwady-Chindwin River system flowing in the Bay of Bengal some one to five million years ago; the red circles are the gas-bearing discoveries in the Western Ayeyarwady Fan

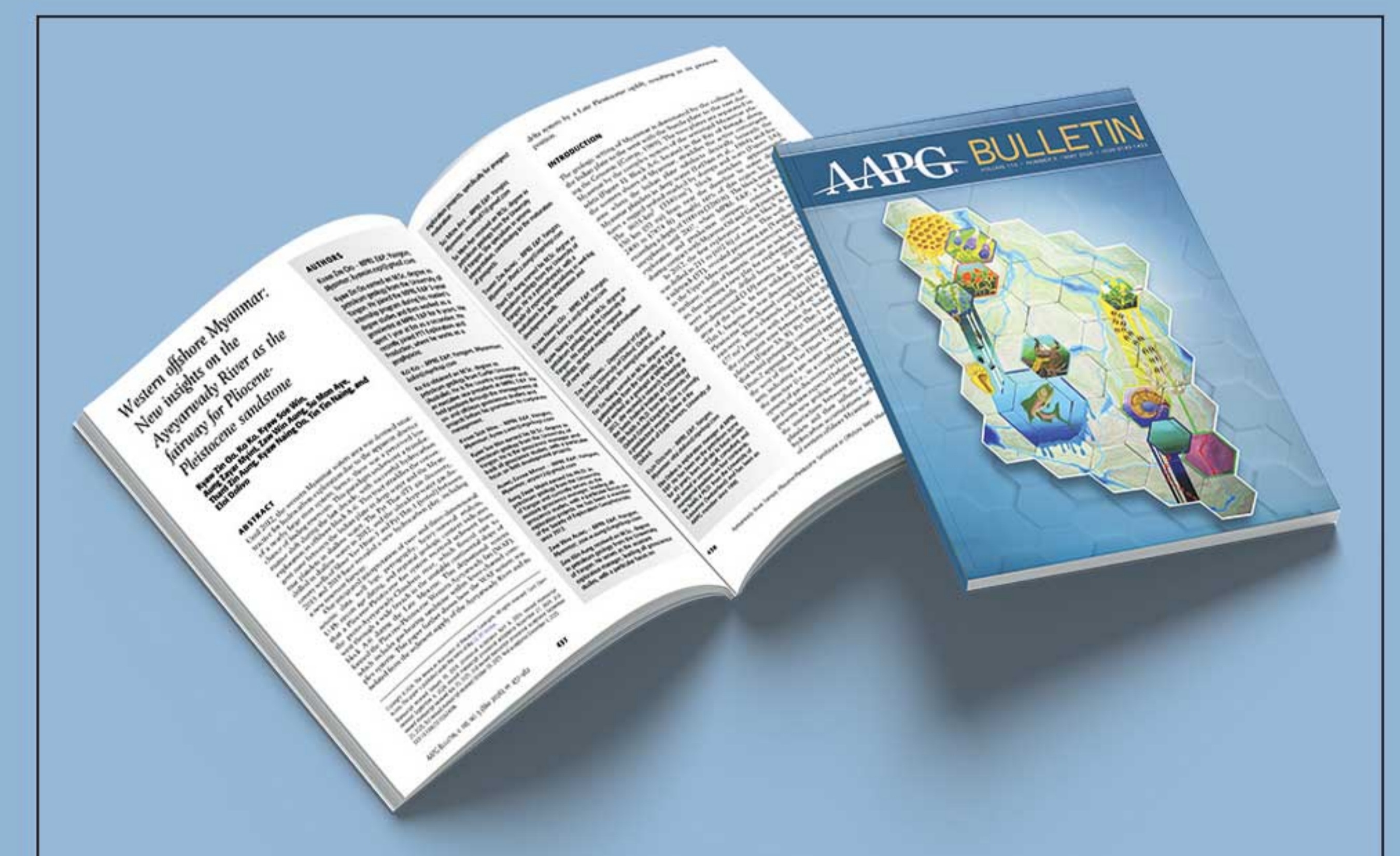
petroleum geoscience experience span across four continents; his unfailing belief in this team carried the paper through three rounds of the AAPG's unsparring review. To each member of this team: the company's sincerest gratitude and admiration for making this history.

**What This Achievement Represents**

The AAPG Bulletin is not easy to enter. The rejection rate is high, the reviewers are meticulous and relentless, and the standards are global. For a team based in Yangon, working on data from a block that was deemed unattractive for exploration just a decade ago, to produce a paper of this caliber — and to survive three rounds of peer review to get it there — is an achievement that speaks for itself.

But beyond the science, this paper is a statement about what MPRL E&P is and what it aspires to be: a Myanmar company, built on Myanmar talent, contributing to the global body of knowledge in the industry we call home. More than a century after Professor Laurence Dudley-Stamp lamented that Myanmar's geological data remained locked in private company files, our team contributed to open that vault — and offered it to the world.

U Moe Myint and the entire leadership of MPRL E&P extend their deepest congratulations and gratitude to every member of this team. The work was hard. The patience required was immense. The result is extraordinary.



**A Milestone for Myanmar Geoscience**

*The publication of MPRL E&P's research in the AAPG Bulletin represents more than a scientific achievement. It demonstrates the growing contribution of Myanmar geoscientists to international research and highlights the importance of sharing local knowledge and expertise with the global scientific community. ■*

# MPRL E&P Supports Education and Youth Development at the School Library Development and Reading Promotion Festival

Thal Sandy Tun

Recognizing education, knowledge development, and youth empowerment as important foundations for sustainable development, MPRL E&P participated in the “School Library Development and Reading Promotion Festival” held on 20 June 2026 at Basic Education High School No.1, Minbu Township, Magway Region.

The festival aimed to promote a reading culture among students, strengthen school libraries and encourage young learners to develop knowledge and skills through reading and educational activities. The event served as an important initiative to support the development of future generations by improving access to learning opportunities and educational resources.

The festival was attended by Magway Region Chief Minister U Tin Ko Ko, regional government, representatives of regional and district-level departments, local administrative officials, social organizations, teachers, students and community members. According to the *Myanma Alinn Daily* newspaper published on 21 June 2026, approximately 2,000 students from basic education schools in Minbu Township participated in the event.

The initiative reflects the broader importance of human capital development and youth empowerment as key drivers of national progress. In this context, MPRL E&P continues to contribute through responsible business practices and Corporate Social Responsibility (CSR) initiatives that support education enhancement, capacity building, and community development in areas where the company operates.



As part of the festival, the Mann Oilfield Exhibition, jointly presented by Myanmar Oil and Gas Enterprise (MOGE) and MPRL E&P, showcased the oil and natural gas industry value chain, including exploration, production, transportation and distribution processes. Through exhibition displays, technical illustrations and interactive models, attendees gained insights into energy sector operations and the role of the industry in supporting economic development.

MPRL E&P’s Health, Safety and Environment (HSE) Department provided practical knowledge sharing through a miniature pumping unit model demonstrating oil production processes. The exhibition also featured workplace safety awareness materials, environmental monitoring reports, Golden HSE Rules publications, and other educational resources to promote understanding of safe operations, environmental responsibility and sustainable practices.





District Information and Public Relations Department to provide refreshments and drinking water for participating students.

The Mann Oilfield Exhibition also provided interactive learning opportunities for visitors. Students and teachers participated in educational games and coloring activities, with small gifts provided to participants. The exhibition attracted strong interest from students, teachers, government representatives and community visitors throughout the event.

Through its continued support for education-focused initiatives and community development, MPRL E&P remains committed to strengthening local capabilities and creating opportunities for future generations. These efforts reflect the company's role as a responsible partner in advancing sustainable development and community well-being alongside its core energy operations. ■



In Mann Field, the company has helped transform village libraries into community learning centers by improving access to educational resources and providing books donated by the employees and Management. These community learning centers support children and youth through English-language learning, basic computer skills training, arts and creative activities, reading program while promoting effective use of library resources.

To facilitate the successful implementation of the event and encourage student participation, MPRL E&P contributed MMK 2,000,000 to the Minbu



In addition to showcasing energy operations, MPRL E&P highlighted its CSR initiatives and community development programs through exhibition materials, including information on vocational training programs, livelihood development activities, agricultural support initiatives, health awareness materials, stakeholder engagement activities, and company publications such as *Insight!* and *Doh Mann Myay* newsletters, reports, illustrated educational books, and coloring books.

MPRL E&P's participation in education and community development extends beyond the festival.



# A Summer of Colors, Skills and New Opportunities

Pyae Pyae Phyoe

Since 2023, MPRL E&P's CSR Program has transformed the traditional school break into a season of learning, creativity and growth for families across Mann Field Communities. Continuing this commitment, Summer Program 2026 brought together children, youth and women through a range of engaging activities designed to nurture creativity, strengthen practical skills and create opportunities for personal development.

This year's Summer Program engaged 77 trainees through Basic Art Classes, Refresher Art Class, Flower Button Handmade Training and Basic Computer Skills Training. More than a series of training sessions, the program created spaces where participants could discover new interests, build confidence and form meaningful connections within their communities.

Through these moments captured in photographs, we revisit a summer filled with learning, shared experiences and achievements.



**"Every drawing begins with a single line, and every idea begins with imagination."**

Blank sheets of paper slowly transformed into colorful landscapes, imaginative sketches and expressions of creativity. Across Mei Bayt Kone, Mann Kyo and Kyar Kan Villages, children gathered with pencils, paintbrushes and eager minds to explore the world of art.

The Basic Art and Refresher Art classes engaged a total of 49 trainees, creating an enjoyable environment where young learners could strengthen their artistic abilities while developing concentration, confidence and creative thinking. Guided by experienced trainers through both practical exercises and hands-on learning, the sessions encouraged children to express themselves freely and discover their individual talents.

For many participants, the classes became more than art lessons — they became opportunities to build confidence and see their ideas come to life.



**"Learning new skills today can create new opportunities tomorrow."**

Beyond the arts, Summer Program 2026 also offered practical learning opportunities designed to support future livelihoods and career developments.

At Nan U Community Center, local women gathered every weekend to participate in Flower Button Handmade Training. Through careful hands and patient practice, colorful materials gradually transformed into decorative handmade designs.

The training equipped 15 participants with practical crafting techniques while encouraging creativity and introducing skills that may support future home-based income opportunities. Beyond learning a craft, the sessions created an environment where participants could exchange experiences and strengthen their confidence in developing new skills.



**"Every computer skill learned is a step toward future opportunities."**

Digital literacy was another important focus of this year's Summer Program. Recognizing the increasing importance of technology in education and employment, MPRL E&P organized Basic Computer Skills Training for local youth aged 16 and above. Conducted at Aye Mya Community Center and facilitated by a trainer from MCC Computer Training Center (Minbu), the course provided practical lessons covering computer fundamentals, internet usage, Microsoft Word, Excel, PowerPoint and Adobe PageMaker.

For the 13 trainees who completed the course, digital literacy represented more than learning to use technology. It provided practical skills that can support future education, employment and personal development.



**“Learning becomes more meaningful when experiences are shared.”**

Throughout the Summer Program, learning extended far beyond lessons and classrooms. Participants built friendships, shared experiences and encouraged one another while trainers, volunteers, parents and the CSR Team members worked together to create supportive learning environments.

The program reflected the strength of collaboration between local communities, experienced trainers and MPRL E&P’s CSR Team. Through close coordination and continuous support, participants were encouraged to stay engaged throughout their learning journey.

Often, some of the most meaningful moments happened between lessons — in conversations, teamwork and shared laughter.



**“Every effort deserves recognition, and every achievement deserves celebration.”**

The Summer Program concluded with a closing ceremony held on 16 May 2026 at Auk Kyaung Pagoda, bringing together approximately 130 participants including trainees, trainers, parents, volunteers, community members and the CSR Team members.

The event celebrated not only the completion of training activities but also the creativity and dedication demonstrated throughout the summer. Art-work produced by young trainees and handmade creations developed during the Flower Button Training were displayed in a small exhibition that attracted strong appreciation from families and guests.

Completion certificates and achievement awards were also presented to outstanding trainees across the different training categories, creating proud moments for participants and their families.



**“Some of the most meaningful outcomes cannot always be measured in numbers.”**

Behind the achievement of the 77 trainees lies a larger story of talents discovered, confidence gained and opportunities created. As participants returned to their schools, homes and daily routines, they carried more than newly acquired skills and certificates. They carried meaningful experiences, stronger confidence and memories that may continue to shape their future journeys.

Through initiatives such as the Summer Program, MPRL E&P continues investing in community capacity building and creating pathways for growth, learning, and opportunity — helping children, youth and women build brighter futures, one summer at a time. ■



# MPRL E&P and M&AOSB Mark World Environment Day Through Community Climate Action

Pyae Pyae Phy

As communities around the world observed World Environment Day 2026 under the theme “A Global Call for Climate Action,” MPRL E&P and M&AOSB, sister companies within the MPRL E&P Group of Companies, joined the global movement by organizing environmental awareness and climate action activities through their respective CSR Programs.

World Environment Day, observed annually on 05 June, serves as the United Nations’ environmental campaign, encouraging governments, organizations and individuals to take action in protecting the planet. This year’s theme emphasizes the urgent need for collective responses to climate change and reinforces the importance of environmental stewardship at every level of society.

In line with this global call, both companies engaged local communities and young people in their project areas through awareness programs, discussions and educational activities aimed at inspiring environmental responsibility and climate-conscious action.

## Bringing Climate Awareness to Mann Field Communities

In Mann Field Communities, MPRL E&P’s CSR Program organized a climate change awareness event on 03 June 2026 at Auk Kyaung Pagoda, bringing together 213 community members from surrounding villages.

The program was jointly implemented by MPRL E&P’s CSR Team and HSE Team as part of the company’s ongoing commitment to environmental conservation and sustainable community development.

The awareness program provided a platform for local communities to learn more about climate change, environmental protection, and the role communities can play in building a sustainable future.

During the event, MPRL E&P’s Head of Corporate Sustainability shared insights on the company’s CSR initiatives in Mann Field, including waste management activities and environmental conservation programs. Community members were encouraged to actively participate in environmental protection



efforts and contribute to maintaining cleaner and healthier surroundings.

The company’s Assistant HSE Manager highlighted the importance of collaboration between businesses and communities in addressing environmental challenges. Through examples of ongoing climate-related activities undertaken jointly by MPRL E&P and local residents, participants gained a better understanding of how collective action can contribute to long-term environmental resilience.



Adding further depth to the program, MPRL E&P’s Environmental Officer conducted an interactive awareness session on the significance of World Environment Day. Participants learned about the causes and impacts of climate change, the environmental challenges facing communities today, and practical actions that individuals can take to reduce environmental risks and protect natural resources.

The event encouraged active participation through discussions and question-and-answer sessions, allowing community members to share their experiences and perspectives. Participants who



contributed to the discussions received commemorative gifts from the CSR Program in recognition of their engagement.

One of the most meaningful moments of the event came when participants were invited to write personal pledges for environmental conservation and place them on a symbolic “Commitment Tree.” The activity reflected a shared determination among community members to contribute to environmental protection and climate action in their daily lives.

Beyond annual awareness events, MPRL E&P’s CSR Program continues to demonstrate its commitment to environmental stewardship through regular initiatives, including regular waste collection activities conducted throughout Mann Field Communities.





### Inspiring Young Environmental Advocates in Ayeyarwady Region

Meanwhile, in the Ayeyarwady Region, M&AOSB's CSR Program commemorated World Environment Day by focusing on one of the most important drivers of long-term environmental sustainability — education.

On 05 June 2026, M&AOSB organized an environmental awareness talk and essay competition at Basic Education High School (Sub) of Nanttharpu Village Tract in Nga Yoke Kaung Town. The event attracted 121 participants, including students from Grades 6 to 12 and their teachers.

The awareness session introduced students to the significance of World Environment Day and the critical relationship between people and the natural environment. A member of M&AOSB's CSR Team explained how ecosystems, climate systems, biodiversity, natural resources, and human well-being are interconnected, while also discussing the causes of environmental degradation and practical conservation measures.

The program was further strengthened by a presentation from the Deputy Staff Officer of the Information and Public Relations Department of Nga Yoke Kaung, who discussed preventive measures to reduce climate-related risks and highlighted the importance of protecting biodiversity and natural ecosystems for future generations.

To encourage creativity and critical thinking, M&AOSB's CSR Program and the school jointly organized an essay competition under the World



Environment Day theme, "A Global Call for Climate Action." Eleven students participated, expressing their ideas and perspectives on environmental protection, climate change, and sustainable development through their essays.

The competition not only provided an opportunity for students to demonstrate their knowledge but also encouraged them to reflect on their personal role in safeguarding the environment.

Essays were evaluated by a judging panel comprising the school's Headmaster, the Deputy Staff Officer from the Information and Public Relations Department of Nga Yoke Kaung, and representatives from M&AOSB's CSR Team. Winners were selected based on established competition criteria and scoring guidelines.

An award ceremony was subsequently held on 08 June 2026, where cash prizes were presented to the first, second, and third prize winners in recognition of their outstanding efforts.

### Building a Shared Commitment for the Future

Through their World Environment Day 2026 activities, MPRL E&P and M&AOSB reaffirmed their commitment to environmental sustainability, climate action and meaningful community engagement. By working alongside local residents, schools and stakeholders, the companies continue to promote environmental awareness and encourage collective responsibility for protecting the planet.

As the global community responds to the call for climate action, these initiatives demonstrate how partnerships between companies and communities can contribute to building a more environmentally conscious and resilient future for generations to come. ■

## ကတိသစ္စာပြု အထိမ်းအမှတ်သစ်ပင် (Tree of Commitments)



“ ရာသီဥတုပြောင်းလဲမှုတိုက်ဖျက်မှုမှိုင်းဝန်းကြိုးပမ်းဆောင်ရွက်ဖို့ ”

# Cultivating Knowledge, Strengthening Livelihoods

*MPRL E&P Empowers Mann Field Farmers Through Soil Enhancement and Sustainable Agriculture Training*

**Pyae Pyae Phyoo**

Agriculture remains the backbone of livelihoods for many families across Mann Field Communities. Yet, farmers today face growing challenges, including rising production costs, declining soil fertility, climate variability and fluctuating market prices. To help address these issues and strengthen community livelihoods, MPRL E&P's CSR Program continues to invest in agricultural development initiatives that promote sustainable farming practices and long-term resilience.

As part of the FY 2026-2027 Soil Enhancement Program, MPRL E&P's CSR Program organized a "Soil Enhancement Knowledge-Sharing Session" on 21 May 2026 at Mann Kyo Monastery in collaboration with Doe Kyay Latt Limited, a local agricultural training organization. Approximately 250 farmers from Mann Field Communities attended the event, where they learned about soil health, sustainable fertilizer alternatives and climate-smart agricultural practices. The session also marked the beginning of a year-long agricultural capacity-building initiative designed to equip local farmers with practical knowledge that can be directly applied to their farms.



Building on this foundation, MPRL E&P's CSR Program organized a two-day "Basic Agriculture, Organic Fertilizer Making, Soil Conservation and Climate-Smart Agriculture Training" in collaboration with Doe Kyay Latt on 04 and 05 June 2026. The training brought together 39 farmers for in-depth learning and hands-on practice.

Led by U Than Zaw, Training Consultant & Agronomist from Doe Kyay Latt, the program covered key aspects of sustainable farming, including soil management, seed selection, pest and disease control, harvesting techniques and climate considerations. Participants learned how to assess soil fertility, identify nutrient requirements for major crops such as paddy, groundnut, sesame and tomato, and improve acidic soils using agricultural lime and other locally available resources.



including fish amino acid fertilizer, fruit amino fertilizer, kitchen waste compost, organic compost, effective microorganism (EM) solutions and lime-sulfur pesticides. These locally produced alternatives can help reduce farming costs, improve soil fertility and decrease dependence on external agricultural inputs.

Practical demonstrations formed a key component of the second day of training, enabling farmers to prepare EM solutions, organic fertilizers and natural pesticides themselves. Participants also gained



The training also highlighted the importance of selecting quality seeds and applying proper storage techniques to improve crop establishment and productivity. Farmers were introduced to integrated pest control approaches that balance crop protection with the conservation of beneficial insects, which play an important role in maintaining healthy agricultural ecosystems.

A major focus of the training was the promotion of affordable and sustainable alternatives to chemical fertilizers. Participants learned how to produce a range of bio-based agricultural inputs,



hands-on experience in soil pH testing, NPK analysis and paddy seed selection techniques, helping them make more informed decisions about soil management and fertilizer application.

Through the Soil Enhancement Program, MPRL E&P's CSR Program is helping Mann Field farmers develop the knowledge and practical skills needed to improve soil health, reduce production costs and strengthen agricultural resilience. By promoting sustainable farming practices, the program contributes to stronger livelihoods, healthier ecosystems and a more sustainable future for Mann Field Communities.

The following reflections from participating farmers highlight the practical value of the training and its potential impact on their farming practices.



**Farmer Voices: Practical Lessons from the Field**



**U Aung Myint San**  
Mann Kyo Village

"One of the biggest challenges farmers face is unstable market prices. When harvests are abundant, prices often fall sharply, and by the time prices improve, most farmers have already sold their produce. At the same time, our soils have become increasingly acidic, making cultivation more difficult and costly.

The training helped me understand that successful farming starts with healthy soil. Previously, I focused mainly on land preparation and planting, but now I understand the importance of applying lime and gypsum to improve soil conditions before cultivation. I also learned how to make fish amino acid fertilizer and organic compost using locally available materials. These methods are affordable, practical and can help farmers reduce production costs while improving crop performance.

Thank you to MPRL E&P's CSR Program for supporting the Mann Field Communities across agriculture,

health, education, and development. I am particularly grateful for the agricultural support boosting our farmers' livelihoods. Wishing MPRL E&P continued success in empowering our community."



**Daw Thin Thin Nwe**  
Mann Kyo Village

"For many years, I did not know why some crops grew well at first but later turned yellow, weakened or died before harvest. We followed traditional practices and relied largely on experience, but we rarely understood the actual causes of the problems we encountered in the field.

This training provided answers to many of my questions. I learned how to test soil conditions, identify whether soil is acidic, select quality seeds and manage pests more effectively. One of the most surprising lessons was learning that lime can be used to improve agricultural soils. Previously, I only knew it for household uses. The climate-smart agriculture lessons were also very valuable because changing weather patterns are becoming a major challenge for farmers."



**U Nay Zaw**  
Chin Taung Village

"In the past, whenever pests or diseases appeared, I immediately purchased chemical pesticides recommended by agricultural shops. I rarely considered whether there were other solutions. As a result, production costs increased while soil quality continued to decline.

The training helped me realize how years of excessive chemical fertilizer use have contributed to soil acidity in our area. I learned how to produce organic fertilizers, prepare natural pesticides, and improve soil fertility using sustainable methods. What encouraged me most was learning that healthy soils can gradually be restored through the consis-

tent use of compost, Bokashi fertilizer and other natural inputs. I have already started applying some of these techniques on my farm and look forward to seeing long-term improvements."



**U Thein Min Zaw**  
Aye Mya Village

"Before attending the training, I often assumed that crop problems such as leaf curling, pest damage, and poor growth were simply caused by insects or weather conditions. I did not fully understand the role that soil health plays in crop performance.

The practical soil testing exercises were especially valuable because they showed me that many soils in our area are highly acidic. After returning home, I immediately began applying lime during land preparation and using compost, fish amino acid fertilizer and EM solutions in my nursery operations. Even within a short period, I noticed stronger seedlings, healthier plant growth and fewer pest-related issues. These experiences have convinced me that improving soil health is one of the most important investments a farmer can make for the future.

I am deeply grateful for MPRL E&P's CSR Program and its continuous support for Mann Field farmers. Thanks to their training and agricultural inputs, our farmers have adopted better cultivation methods, improved soil quality, and reduced environmental impacts." ■



# Bringing Coral Back to Life: A Conversation With Dr. Cherry Aung

Pyae Pyae Phyo



Coral reefs are among the world's most valuable marine ecosystems, supporting biodiversity, fisheries, coastal protection and local livelihoods. Along Myanmar's Ayeyarwady coastline, however, these ecosystems are facing increasing pressure from environmental degradation and unsustainable human activities.

In response, MPRL A-6 Limited launched the Coral Revive Project in 2024 as part of its CSR Program. Located near Sabahtar Island within Nga Yoke Kaung Bay in the Ayeyarwady Region, the project focuses on restoring coral reefs and seagrass habitats while promoting sustainable development and community participation.

To learn more about the project, we spoke with Dr. Cherry Aung, Professor and Head of the Marine Science Department at Myeik University, who serves as the Technical Lead and Consultant for the Coral Revive Project.

**For readers who may not be familiar with the Coral Revive Project, could you briefly explain what the project is about?**

The Coral Revive Project is a coral reef conservation and restoration initiative being implemented around Sabahtar Island in the Nga Yoke Kaung Bay area. The project aims to restore damaged coral reefs, improve marine habitats and encourage local communities to participate in protecting coastal resources.

The main goals are to raise awareness among local communities about the importance of coral reef ecosystems, restore coral reefs to create healthier fish habitats and establish locally managed conservation areas that can also support sustainable ecotourism activities.

Ultimately, we want communities themselves to become long-term protectors of these valuable marine ecosystems.

**Why is coral reef conservation important in the Ayeyarwady coastal region?**

In 2017, I led a study called Marine Resources of Nga Yoke Kaung Bay, which highlighted the urgent need for conservation along the Ayeyarwady coast. Myanmar's coastline is home to more than 500 coral species, including around 200 species found along the Ayeyarwady coastline.

At that time, we had already observed signs of coral reef degradation. Today, in 2026, the changes have become even more visible. Some coral reef areas have significantly declined or disappeared, particularly in densely populated shallow coastal areas. Biodiversity has also decreased considerably.



The Nga Yoke Kaung area was once famous for its rich seagrass meadows and sea turtles. Local people even called the seagrass as "turtle grass," and the area itself became known as "Turtle Bay." Unfortunately, many of these resources have now greatly declined.

This is why conservation efforts are so important — not only for biodiversity, but also for fisheries, coastal ecosystems and the livelihoods of local communities.

**How did the collaboration between MPRL A-6 and the Marine Science Department begin?**

This project has actually been a dream of mine for many years. After many discussions and preparations, implementation began in 2023, and the Coral Revive Project officially expanded in 2024.

The collaboration between MPRL A-6 and marine scientists has allowed us to combine scientific expertise, technical support and community engagement in a balanced way, which increases the project's chances of success.

I also hope this initiative can contribute to developing internationally recognized conservation networks and expert groups in Myanmar in the future.

**What role have you personally played in the project?**

I have participated both as a marine scientist and

as a facilitator for community awareness and education activities.

My work includes providing scientific and technical guidance, conducting biodiversity assessments, advising on coral restoration methods and sharing practical knowledge with local communities. I have also focused on encouraging community participation because successful conservation depends heavily on local involvement and long-term commitment.



**What progress has the Coral Revive Project achieved so far?**

We have already seen encouraging results. Artificial coral reefs and coral nurseries have been established, and fish and other marine organisms have started inhabiting these restored areas. During every field visit, we continue to observe increasing marine biodiversity and even new marine species.

Another major achievement has been the growing participation of local communities. People are now more aware of the value of their natural resources and are actively supporting conservation efforts. Illegal extraction and trade of coral materials have also significantly decreased since the project began.

It is especially encouraging to see local people respecting conservation rules, including floating



signboards and protected zones established around the conservation areas.

**What have been some of the biggest challenges and lessons learned during the project?**

One major challenge is that coral reefs grow slowly. Seagrass cultivation can also be very difficult because environmental conditions strongly affect survival rates.

Another important challenge is ensuring continuous community engagement and awareness. Conservation is not only about restoring ecosystems — it is also about helping people understand the long-term value of protecting natural resources.

At the same time, we have learned many valuable lessons. Teamwork, mutual support, enthusiasm and proper planning are all essential for success. Site selection and technical skills are also very important. Most importantly, strengthening the skills and capacities of local communities is critical because they are the key stakeholders in long-term conservation.

**Are there any memorable moments from the project that stand out to you?**

There have been many memorable experiences. One unforgettable moment happened during heavy rain, when one of my students and I remained underwater, completely immersed in the beauty of the coral ecosystem while everyone else had already returned to the boat. I am especially grateful to the student diver who accompanied me.

Another memorable aspect has been working with the Coral Revive Project Team itself. The teamwork, unity and mutual support within the group have been truly inspiring. Seeing fish settle into artificial reefs and watching coral fragments survive and grow has also been deeply rewarding.



**What is your long-term vision for the Coral Revive Project?**

As a marine scientist, I believe coral reef conservation supports not only environmental sustainability, but also regional socio-economic development, fisheries, biodiversity and the ASEAN vision of the Blue Economy.

My long-term goal is to establish a well-functioning, locally managed coral reef conservation area around Sabahtar Island that can become a model for future conservation efforts across Myanmar.

Although the project has already made encouraging progress, much more work remains to be done, including scientific data collection, training programs, coral propagation activities and community capacity building.

Great achievements often begin with small efforts. I truly believe that this initiative can one day become a nationally recognized conservation effort that we can all be proud of. ■



# Protecting Reefs, Empowering Young Minds

**Pyae Pyae Phyo**

On a calm morning in early May, a group of children from coastal communities in Nga Yoke Kaung put on life jackets, adjusted their snorkeling masks and prepared for an experience they would never forget. For many of them, it was the first time they had ever looked beneath the surface of the sea.

Just below the clear waters near Sabahtar Island, schools of fish moved around artificial reef structures while coral fragments began taking hold on metal frames. What looked like simple underwater structures was, in fact, part of an ongoing effort to restore damaged coral reefs and rebuild marine habitats. The experience was both surprising and inspiring for the young visitors.

The visit was conducted under the Coral Reef Conservation Pilot Project, also known as the Coral Revive Project, supported by the CSR Program of MPRL A-6 Limited.

## Restoring Life Beneath the Sea

MPRL A-6 launched the Coral Revive Project in April 2024 under its Locally Managed Coral Reef Conservation Area Project (2024-2026). Fully funded through the company's CSR Program, the initiative focuses on restoring degraded reef areas near Sabahtar Island in Nga Yoke Kaung.

Coral reefs are essential to coastal ecosystems, providing shelter for marine life, protecting shorelines and supporting fishing communities. However, they are increasingly threatened by climate change, pollution and destructive fishing practices. To address these challenges, the project is implemented in close collaboration with local communities, government agencies, divers and marine specialists. Together, they are creating artificial reef habitats that support coral growth and encourage the return of marine biodiversity.

Since its launch, the project team has installed a range of underwater structures, including fish



condos, coral nurseries, concrete reef pipes, reef balls and reef stars. By May 2026, the conservation site near Sabahtar Island included eight fish condos, two coral nursery frames, 12 concrete reef pipes, 24 reef balls, and 26 reef stars. An additional 10 reef stars were also installed at a separate conservation site in Ngwe Saung.

## Adding New Reef Structures

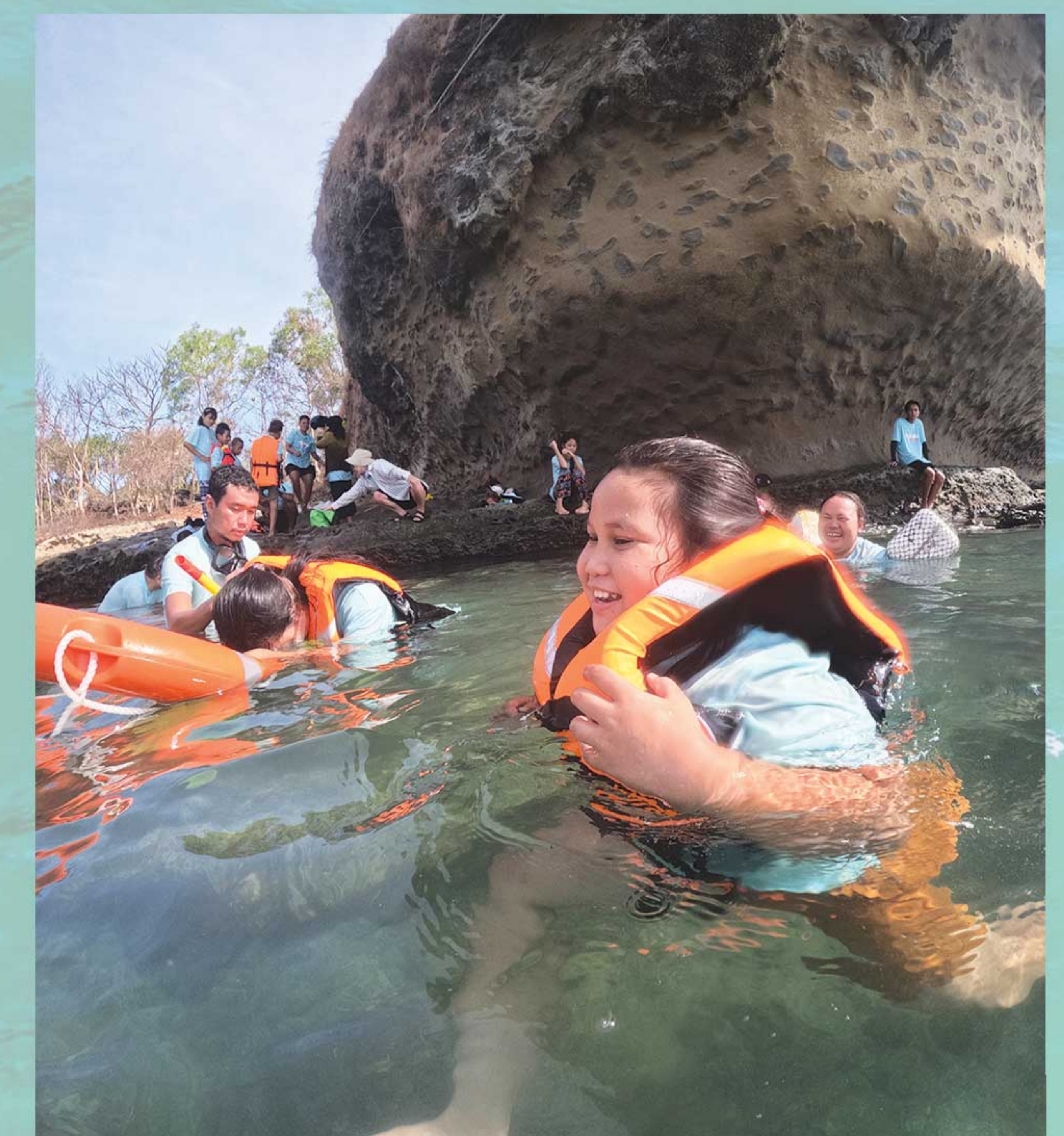
On 05 May 2026, the PIP CSR Team and local partners continued restoration efforts by deploying 12 additional concrete reef balls at the project site. Each reef ball, weighing more than 200 kilograms, was carefully transported on a wooden raft and placed in the waters near Sabahtar Island in Nga Yoke Kaung. Designed in dome shapes with openings, the reef balls mimic natural coral formations, providing shelter and breeding grounds for fish while offering hard surfaces for coral larvae to settle and grow.

During the same visit, the team cleaned existing coral nurseries by removing sand, algae and marine debris. They also repaired floating signboards, buoys and signal lights that mark the conservation area and warn passing boats to avoid damaging the underwater structures.

A total of 18 participants, including local divers, a diving instructor, community members and the PIP CSR Team, took part in the day's activities.

## Learning Beyond the Classroom

The following day, 06 May 2026, the project focused on environmental education and community engagement. 19 children aged 10 and older from nearby villages were invited to join a coral conservation awareness session and a guided snorkeling visit to the project site.

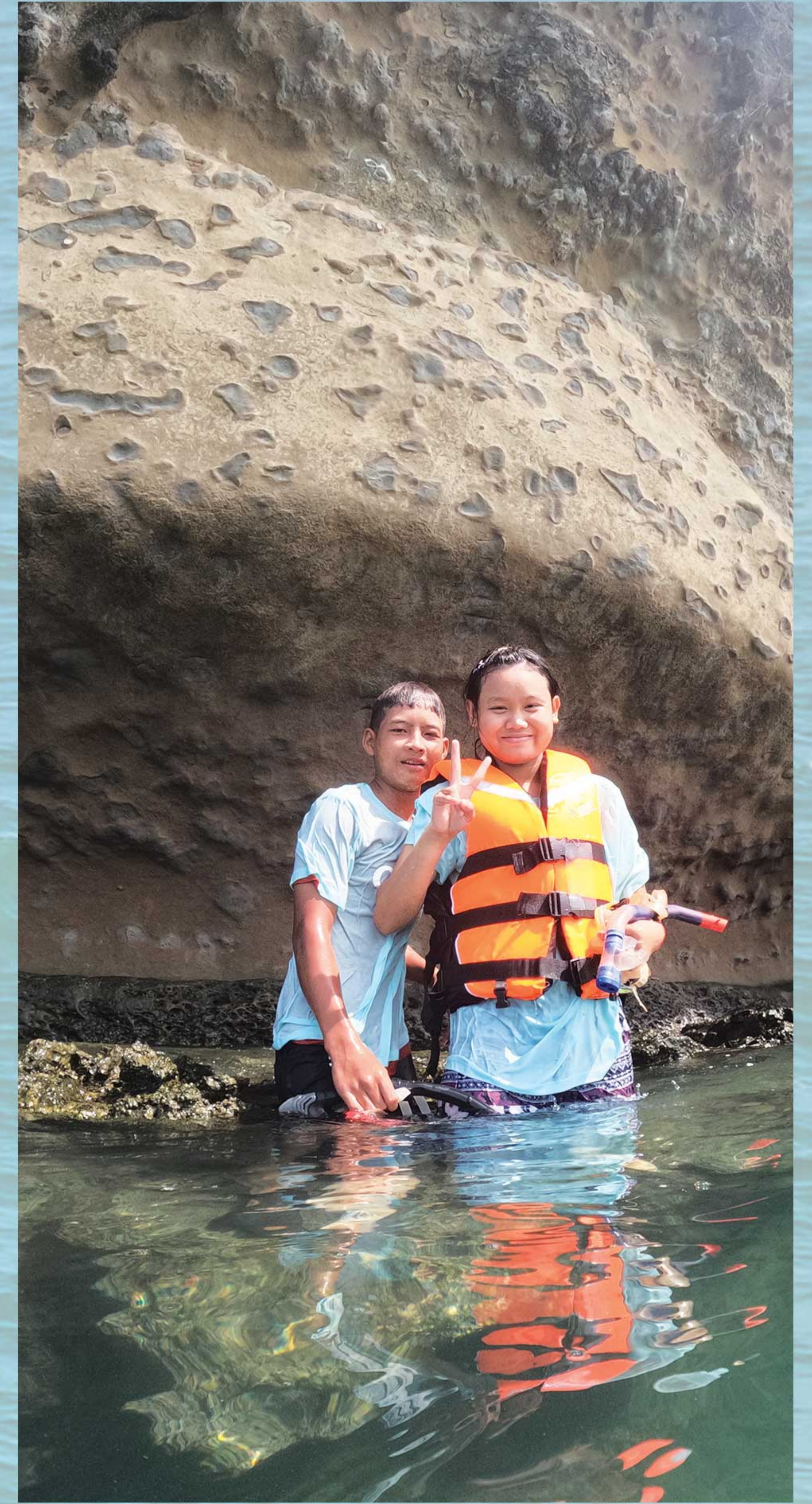
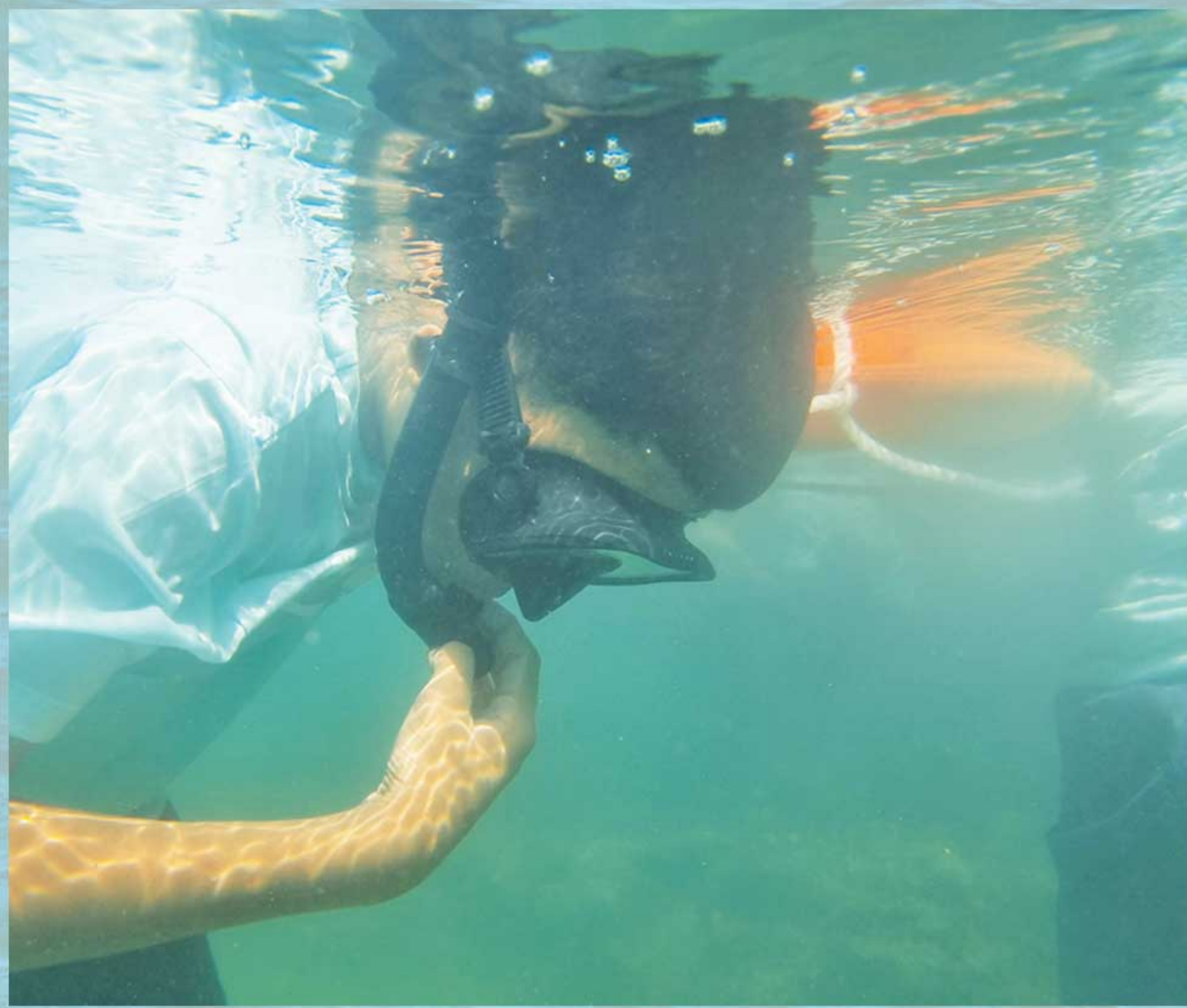




**A Memorable Experience**

One of the participants, Ma May Thingyan Moe, a Grade-9 student from Nanttharpu Village Tract, shared her experience, "I really enjoyed participating in the coral conservation site visit and seeing fish underwater. It was amazing to see the coral project, coral growth and fish around the reef structures. We had learned about the project before through knowledge-sharing sessions at the Thuta Pinlel Library, but this was our first time visiting the site in person. We were very happy to learn more about the project and experience snorkeling."

A total of 31 participants, including children, community members, local divers and the PIP CSR Team, joined the activities on 06 May 2026.



U Sithu Aung, a PADI Freediver Instructor, led the educational session, explaining the importance of coral reefs and how they support marine life, protect coastlines, and benefit both people and nature. He also introduced the children to basic snorkeling techniques and water safety.

Before the snorkeling activity, the Coral Revive Team deployed 10 additional reef stars, bringing the total to 26. The children also helped attach coral fragments to the star-shaped structures, allowing them to take part directly in the restoration process.

The children entered the water in small groups of five, each wearing life jackets and supported by life buoys. Guided by U Sithu Aung, local divers and members of the PIP CSR Team, they observed the growing marine habitat beneath the surface. For many, it was their first opportunity to witness coral restoration in action.



**Inspiring Future Stewards of the Sea**

The Coral Revive Project is restoring more than coral reefs. It is helping young people understand the importance of protecting the natural resources that sustain their communities.

By combining practical conservation work with firsthand learning experiences, the project is giving children a deeper connection to the sea and showing them that they can play a meaningful role in preserving it.

For the children who looked beneath the waves for the first time, the visit was more than an educational activity. It was a memorable introduction to the beauty of the marine environment and a powerful reminder that, with care and cooperation, damaged ecosystems can recover and thrive once again. ■





# Empowering Myanmar's Future Energy Professionals

Zaw Win Aung

At MPRL E&P, nurturing the next generation of professionals remains an important part of supporting the future of Myanmar's energy sector. Developing skilled geoscientists and petroleum engineers has long been one of the company's core commitments, and over the years, this commitment has evolved into a sustained partnership with Myanmar's leading universities.

MPRL E&P's journey in human capital development began in 2009 with the launch of an internship program for geoscience master's degree students at Yangon University. By 2013, the initiative expanded to include petroleum engineering students from Yangon Technological University. Since 2024, the company's commitment has grown further, with young professionals from the Technical Team — many of whom are alumni of the Asian Institute of Technology — have volunteered as part-time lecturers at Yangon Technological University. This civic contribution helps address faculty shortages while bringing practical industry experience directly into the classroom.

Building on these longstanding initiatives, MPRL E&P launched the Visiting Lecture Program in 2026 to further strengthen collaboration between academia and industry and help narrow the gap between university learning and real-world oil and gas industry practice. The program is designed to give students a clearer understanding of what awaits them after graduation. While universities provide essential theoretical frameworks, the oil and gas industry often requires practical judgment, data integration skills and experience-based decision-making that are not always fully covered in textbooks or formal lectures.

The first lecture of the academic year commenced at Yangon University, where I had the privilege of conducting a two-day academic-industry knowledge-sharing session on "Fundamentals and Applications of Seismic Data" at the Mandalay Building on 28 and 29 January 2026. Approximately 20 petroleum geology students participated in the program together with experienced professionals from MPRL E&P.

The session was designed as a step-by-step learning journey. Day One, titled "Introduction to Fundamentals of Seismic Data," focused on building a strong conceptual foundation. Day Two, titled "Practical Seismic Interpretation and Application in Petroleum Exploration," focused on sharing hands-on understanding of how seismic data is applied in professional exploration work.

During the sessions, I emphasized that seismic data — both two-dimensional and three-dimensional — represents one of the most important investments in oil and gas exploration. However, interpretation should never begin without first understanding

how the data is acquired, processed and what limitations it contains. Seismic images alone do not tell the full story. Meaningful interpretation requires geological integration, critical thinking and the ability to reconstruct the subsurface by combining seismic information with sound geological principles.

As I shared with the students, industry practice is often very different from what we learn at the university. Textbooks provide an essential foundation, but real exploration work involves practical challenges that can only be fully appreciated through experience.



One memorable piece of advice passed down from one of my mentors during my early days of seismic interpretation remains highly relevant today: "Until you truly understand the geology behind those colorful displays, it is just a monkey job." This candid statement resonated strongly with students as a reminder that real expertise comes not from software outputs alone, but from geological insight, critical thinking and experience.

Following the successful program at the Yangon University, MPRL E&P's Reservoir Engineering Team later conducted a series of guest lectures at Yangon Technological University beginning in February 2026. Approximately 20 petroleum engineering students participated in the sessions.

The lecture series included U Thu Nyo, Technical Manager, who presented "Optimized Drilling Approaches for Mature Oilfield Development" on 04 February 2026; U Kyaw Swar Win, Deputy Reservoir Engineering Manager, who delivered "Practical Reservoir Engineering Insights from a Mature Oil Field" on 18 February 2026; U Moe Thu, Reservoir Engineer, who discussed "Reserves Estimation: Deterministic and Probabilistic Approaches" on 04 March 2026; and U Kyaw Soe Oo, Senior Res-



ervoir Engineer, who presented "Fundamentals of Petroleum Economics" on 11 March 2026.

These sessions provided students with practical perspectives on drilling, reservoir engineering, reserves evaluation and petroleum economics, enabling them to better understand how engineering principles are applied in actual field operations.

Following the university holiday break, MPRL E&P's technical professionals plan to continue the Visiting Lecture Program when students return to their universities in June 2026. Through internships, volunteer teaching, industrial knowledge-sharing sessions and visiting lectures, MPRL E&P remains committed to investing in human capital development and empowering the next generation of Myanmar's geoscientists and petroleum engineers. ■



# Break Time

## Chat with the Editor

Hnin Wynt Zaw



### **A Journey Build from From the Ground Up**

*Finance and Warehousing to Supply Chain leadership, U Thet Lwin Ohn's career reflects continuous learning, hands-on experience, and steady professional growth. Now serving as Assistant Material & Logistics Manager, he supports critical procurement and logistics activities that help keep operations running efficiently. Over the years, he has built expertise across operations, inventory management, and supply chain coordination while continuing to strengthen his capabilities through education and professional development. This issue, we spoke with U Thet Lwin Ohn about the experiences, lessons, and milestones that shaped his career journey.*

**Looking back on your career journey, was there a turning point that sparked your interest in this field and influenced the path you have taken today?**

Rather than a single defining moment, my career path was shaped through a series of experiences over time. I started my career in Finance, where I built a strong foundation in attention to detail, cost awareness, and system accuracy through accounting and banking processes. Over time, my involvement in logistics, procurement, warehousing, and field operations sparked my interest in how materials, equipment, and supply chain coordination directly support operational success. Technical training and hands-on exposure to field activities further strengthened my knowledge and confidence in the industry.

As my responsibilities expanded into inventory control and material management, I developed a deeper appreciation for the planning, communication, and problem-solving required to keep operations running smoothly. Together, these experiences guided my career journey and strengthened my commitment to growing in Material and Logistics.

**It is interesting to see your career progression, especially with your educational background in Chemistry. How did your early experience in warehousing shape your career and contribute to your professional growth?**

My early years in warehousing became one of the most important foundations of my career. They gave me practical exposure to inventory management, material movement, stock control, and the coordination required to support operations effectively.

Working closely with field teams helped me understand the importance of timely and accurate material management and how it directly impacts operational performance. As my responsibilities grew, I became more involved in coordination, process improvement, and problem-solving, which strengthened my discipline, communication skills, and understanding of the wider supply chain.

Looking back, warehousing gave me not only technical knowledge but also the operational mindset and confidence that supported my growth into leadership roles within Material and Logistics.

**Your story is inspiring because it shows how someone can grow from an entry-level role into leadership. Looking back, what lessons from that journey continue to shape your approach today?**

I believe in staying open-minded and learning the fundamentals from the ground up. Those early experiences helped me understand operational realities and gave me a stronger appreciation for the importance of building a solid foundation for long-term career growth. My time at Mann Oil Field was especially valuable, teaching me how to manage responsibilities under pressure, solve problems quickly, and maintain accuracy, while also building technical knowledge through hands-on experience with specialized tools.

**In your view, what does an "efficient supply chain" look like in practice?**

To me, it means ensuring the right materials and equipment are available at the right time, in the right place, and in the right condition while balancing cost and minimizing delays. Achieving this requires strong coordination across procurement, warehousing, logistics, finance, and field operations.

Accurate inventory management and forecasting are important to avoid shortages or excess stock, especially for critical equipment. Reliable information and flexibility also support timely decision-making and allow teams to respond effectively to changing operational needs. Ultimately, maintaining smooth and reliable operations comes down to teamwork, discipline, and staying proactive.

**Building on your experience in logistics, you have also worked across Myanmar, Thailand, and Singapore. How have these experiences influenced your professional growth?**

Working across different countries exposed me to different operational standards, systems, and ways of working. It strengthened my adaptability, broadened my perspective, and helped shape a practical and flexible approach to logistics.

I also gained valuable experience working with structured systems, international safety standards, and multicultural teams, which strengthened my communication, coordination, and teamwork skills.

**Can you share your experience working on the Asia Drilling AD-1 wellsite and setting up an inventory system from scratch?**

Working on the Asia Drilling AD-1 wellsite gave me valuable hands-on experience. I established an inventory system from the ground up, including organizing warehouse areas, categorizing and labeling materials, and developing inventory records to ensure accurate tracking and minimize shortages.

The role required close coordination with procurement teams and rig crews to support time-sensitive operations while maintaining alignment between physical stock and system records. The experience strengthened my understanding of inventory control, logistics coordination, and the importance of accuracy and adaptability in field operations.

**During the Shwe Yee Htun-1 drilling campaign, you supervised import and export operations, right?**

This campaign stands out because of its fast-paced environment and the responsibility of managing import and export activities in support of critical drilling operations.

The role involved coordinating with multiple stakeholders to ensure timely clearance, accurate documentation, and smooth delivery of specialized equipment. Navigating changing priorities and unexpected challenges strengthened my decision-making, communication, and problem-solving skills, while giving me greater confidence in managing end-to-end logistics under pressure.

**Briefly, how does field experience differ from office-based logistics work, and what lessons have you taken from working on-site?**

Field and office-based logistics differ mainly in pace and execution. Office work is often centered on planning, coordination, documentation, and analysis, while field operations require quick decision-making, adaptability, and real-time problem-solving under pressure.

**Having worked in logistics since the 1990s, how have you seen Myanmar's logistics industry evolve over time?**

Myanmar's logistics industry has evolved from limited infrastructure, manual processes, and slower communication into a more developed and increasingly technology-driven sector. Improvements in road networks, investment, digitalized import processes, and the adoption of modern logistics and communication tools have significantly changed the way operations are managed.



# Building Trust Through Integrity and Continuous Learning

Hnin Wynt Zaw

*For many people, the word “auditor” brings to mind numbers, reports and compliance checks. Yet behind every audit is a professional whose work helps strengthen trust, accountability and transparency across an organization.*

For Daw Ei Ei Khine, Auditor at MPRL E&P, the journey into auditing was not defined by a single turning point, but by a series of experiences that gradually shaped her professional path. Guided by the values of discipline, commitment and integrity instilled by her family from an early age, she has built a career grounded in continuous learning and steady growth.

Born and raised in Yangon, Daw Ei Ei Khine grew up in a close-knit family with her parents and younger brother. Her parents consistently encouraged her to approach life with discipline and dedication, values that continue to guide her both personally and professionally. While she did not initially envision a career in auditing, she was always drawn to practical knowledge and skills that could support a professional future. Over time, her interests evolved toward commerce, finance and business operations.

Her academic journey at Yangon Institute of Economics culminated in a Bachelor of Commerce (B.Com) degree and further strengthened her interest in the business and finance field. Through subjects such as accounting, auditing, economics, management, and banking and finance, she developed a growing appreciation for how organizations operate and how sound financial management supports business success. Choosing to specialize in Commerce became an important step toward the career she would eventually pursue.

Daw Ei Ei Khine’s professional career began in accounting, first as a Junior Accountant and later as an Accountant in the trading sector. These early roles provided valuable hands-on experience and exposed her to the importance of internal controls, financial discipline and operational processes. As her understanding of business functions expanded, so did her interest in risk management and governance, ultimately leading her to transition into auditing.

A significant milestone came in 2011 when she joined Myint and Associates Co., Ltd. as a Junior Auditor. The role provided practical exposure to internal auditing and laid the foundation for her future growth in the profession. Three years later, she was promoted to Assistant Auditor before transferring to the Internal Audit Department of MPRL E&P in 2015. Her dedication and professional development led to another important milestone in 2019, when she was promoted to Auditor. Today, she continues to serve in that role, supporting the organization through independent reviews, risk assessments and continuous improvement initiatives.

For Daw Ei Ei Khine, auditing is far more than reviewing financial records. She sees an Internal Auditor as someone who helps organizations operate more effectively by evaluating internal controls, assessing risks and ensuring compliance with policies and regulations. Her work spans operational and financial reviews, budget monitoring, documentation assessment and collaboration with departments across the business. Through these activities, she helps strengthen the systems and processes that support MPRL E&P’s long-term success.

One aspect of auditing that she particularly values is the opportunity to continuously learn. Each assignment offers insight into different parts of the organization, exposing her to new challenges and business processes. While financial complexities and evolving compliance requirements can be demanding, she views them as opportunities to deepen her knowledge and sharpen her analytical skills.

Daw Ei Ei Khine believes that integrity, professionalism, attention to detail and strong analytical thinking are essential qualities for anyone pursuing a career in auditing. Equally important is a commitment to lifelong learning. She continues to strengthen her professional knowledge through practical experience, self-study, professional discussions, emerging technologies and guidance from experienced colleagues, her superiors and mentors.

Outside of work, Daw Ei Ei Khine enjoys reading, watching movies and spending quality time with her family. These simple activities help her maintain balance, recharge and continue bringing focus and dedication to her work.

Reflecting on her journey, Daw Ei Ei Khine’s story demonstrates that career success is often built through consistency rather than dramatic moments. Through discipline, continuous learning and a strong commitment to professional integrity, she has steadily progressed from accounting to auditing while contributing to the transparency and accountability that help strengthen the organization. Her journey serves as a reminder that meaningful growth often comes from embracing each opportunity to learn, improve and make a positive impact along the way. ■

From Page 21

While challenges such as infrastructure gaps, regulatory changes, and rising costs remain, I feel the industry today is more advanced, competitive, and globally connected.

**What are some major changes in supply chain operations that have had the biggest impact on your work?**

One of the biggest changes has been the transition from the Import Permit system to the Import License Application process, which introduced tighter timelines and more complex documentation requirements. Frequent regulatory updates have also made coordination and compliance more demanding.

At the same time, rising costs and exchange rate fluctuations have increased pressure on planning and purchasing decisions. These changes have reinforced the importance of being adaptable, planning ahead, and working closely across teams to keep operations running effectively.

**What’s keeping you motivated after so many years in the industry and with the same company?**

The industry continues to evolve, creating opportunities to learn and improve. My motivation comes from continuous learning, contributing to operational efficiency, and adding value through stronger supply chain performance.

**Finally, what does being part of MPRL E&P mean to you personally?**

Being part of MPRL E&P means more than a professional opportunity — it has been a long-term journey of growth and development. The company has supported my progression from finance and warehousing into logistics and management while continuing to invest in my learning along the way. To me, it is a place built on trust, continuous learning, and opportunities to contribute. Knowing that my work supports safe and efficient operations gives me a strong sense of purpose and motivates me to continue growing and adding value. ■

*Safety is more than a profession for U Thet Paing Oo — it is a personal commitment shaped by life experiences, family values and a passion for protecting others. As an HSE Officer in MPRL E&P's HSE Department, he plays an important role in promoting workplace safety, supporting operational excellence and helping build a strong safety culture across the organization.*

**Can you tell us about your family, academic background and how it shaped your career?**

My family and education have played a major role in shaping who I am today. About nine years ago, I lost both of my parents, an experience that taught me resilience and responsibility. Today, I am a father of two, and my wife is a fashion designer. My family motivates me to work hard and continuously improve myself.

I graduated with a Bachelor of Engineering in Mechanical Engineering from West Yangon Technological University in 2014. While my academic background is in engineering, I was drawn to HSE because it allows us to protect lives. The combination of personal experiences and engineering training has greatly influenced my career and approach to safety.

**What were your early career steps before joining the oil and gas industry? Have you always worked in HSE?**

I started my career in HSE immediately after graduation. I worked as an HSE Engineer at United Engineering Group, supporting workplace safety on projects for Total E&P in the Dawei and Kanbauk areas. I later joined Dawn Group of Companies, where I spent nearly three years working on construction projects, including PTTEP's Zawtika Operation Center, the International School Yangon Expansion Project and the Boxpak Myanmar Project in Thilawa. Today, I continue to grow professionally as an HSE Officer at MPRL E&P.

**How did your journey begin with MPRL E&P? Did you apply for a position in the HSE Department?**

My journey with MPRL E&P began when I came across a job opening for an HSE Officer on online website. Joining a respected organization like MPRL E&P was an opportunity I was eager to pursue. Because I have always been passionate about workplace safety, I specifically sought a role in HSE. Since joining the company, I have continued to grow professionally while contributing to a strong safety culture across the organization.

**In your opinion, why is HSE crucial for an oil and gas company?**

In my view, HSE is the backbone of an oil and gas company. At its core, it is about protecting lives. In an industry that involves high-pressure equipment and potentially hazardous operations, even a small mistake can have serious consequences. A strong HSE culture helps ensure that employees return home safely to their families every day.

HSE also plays a vital role in protecting the environment, maintaining operational continuity and supporting the company's reputation. Effective safety practices help prevent incidents that could result in environmental damage, operational disruptions or financial losses. In addition, strong HSE performance builds trust among stakeholders and supports compliance with local and international regulations.

# Protecting People, Building a Culture of Safety

**Hnin Wynt Zaw**

Ultimately, HSE is more than a set of rules and procedures. It is a culture that protects people, safeguards the environment and supports the long-term sustainability of the business.

**What do you enjoy most about working in the HSE Department?**

It is the opportunity to prevent incidents before they happen and help build a strong safety culture. Identifying potential hazards and creating safer work environments is both challenging and rewarding. I also find it meaningful to see positive changes in employees' attitudes and behaviors toward safety through our guidance and support. Contributing to a workplace where safety is a shared responsibility is one of the aspects of my job that I value most.

**What has been the biggest challenge in your career, and how do you overcome it?**

One of the biggest challenges in my career is balancing operational requirements with safety standards, as well as bridging the gap between traditional work practices and modern safety mindsets.

There can sometimes be pressure to complete work quickly, but safety must always remain a priority. I have found that influencing attitudes and behaviors is often more challenging than managing technical hazards. To address these challenges, I focus on collaboration, risk assessment and practical solutions. By listening to employees' concerns and helping them understand that safety procedures are designed to protect them, we can often find solutions that support both safety and operational efficiency.

**Have you worked on any special projects? What was the outcome?**

One of the most memorable projects I worked on was the maintenance and restoration effort following the P-100 accident to safely resume operations. The project involved repairing and replacing key equipment components and working closely with third-party contractors and the HSE Team to ensure all activities were carried out safely.

Despite the high-risk nature of the work, we implemented strong preventive measures, enhanced safety procedures and maintained close oversight throughout the project. As a result, the work was completed without any incidents, and operations resumed safely. It was a challenging project, and I am proud of what the team accomplished together.

**Who has been your biggest mentor, and why?**

My biggest mentor is my father. Growing up, I learned

from both his words and his actions. His strong sense of responsibility, resilience and dedication to family shaped many of the values I carry with me today.

The lessons he taught me — particularly the importance of honesty, responsibility and perseverance — became the foundation of my career and strengthened my commitment to protecting people's lives and safety. Although he has passed away, his guidance continues to inspire me every day, and he will always be my lifelong mentor.

**What three skills or qualities are most important in your role?**

The three qualities I consider most important are risk assessment, effective communication and integrity.

As an HSE professional, it is essential to identify potential hazards before incidents occur and implement preventive measures. Equally important is the ability to communicate clearly and understand employees' challenges, as building a strong safety culture requires trust and collaboration. Finally, integrity and accountability are critical because people rely on us to uphold safety standards and make responsible decisions that protect both employees and the organization.

**Where do you see yourself in the next five years?**

In the next five years, I hope to continue growing both professionally and personally while taking on greater leadership responsibilities in the HSE field. I also plan to pursue internationally recognized certifications, such as the NEBOSH (National Examination Board in Occupational Safety and Health) qualification, to further strengthen my expertise and stay current with global safety standards and best practices.

**If there is one thing you would like to improve about yourself, what would it be and why?**

One area I would like to improve is my communication style. Because I am passionate about my work, I sometimes become overly enthusiastic and speak too quickly when sharing information. As an HSE professional, clear and effective communication is essential to ensuring that safety messages are fully understood. To improve, I am working on organizing my thoughts more carefully and communicating in a calmer, more structured manner. I believe this will help me provide even more effective guidance and support to my colleagues. ■



## From Cover

Chief Executive U Moe Myint, whose father U P. Kyaw Myint, was with U Ba Thi, the founder of the Burma Geological Survey (now known as Ba Da Ya), was a staunch and patient supporter of the team of authors. At the time of U Moe Myint's father, nothing could be known of what lies beneath the sea floor of the waters West of Myanmar. There was no seismic to "see" the underground, and the concept of continental plates moving around, colliding to shape mountain ridges, moving apart to form oceans, was still a theory much decried by the geological community. However, no doubt that U P. Kyaw Myint would have been one of our enthusiastic, while critical, supporters.

"Enthusiastic" because our paper is the very first in the AAPG bulletin to include a main author from Myanmar, with all but one of its ten contributors being Myanmar citizens, all but one again from MPRL E&P. "Critical" because such new important paradigm always draws scepticism, while turning accepted ideas upside down.

The geological concept at the heart of this paper — that the sands of Block A-6 were sourced from the east, delivered by an ancient arm of the Ayeyarwady-Chindwin system — did not emerge overnight. Its roots trace back to MPRL E&P's earliest offshore exploration activities, when the Geoscience Team, led by U Ko Ko, U Than Htut (then former Chief Research Officer of MOGE) and U Kyaw Myint (ex-Chief Geophysicist of MOGE), undertook field trips and regional geological studies that first planted the seed of eastward provenance as a working hypothesis nearly 20 years ago. The idea remained an intellectual conviction, however, until the acquisition of well data and 3D seismic surveys across the shallow to deepwater reaches of Block A-6 between 2011 and 2018 provided the hard evidence needed to transform speculation into solid data, and then into solid science.

It was U Moe Myint who, more than eight years ago, encouraged the team to move beyond internal studies and share this concept with the broader scientific community. Responding to that encouragement, the authors submitted a paper to the Myanmar Association of Petroleum Geologist in 2020 — a meaningful first step that, while it did not reach publication, sharpened the team's thinking and resolve. The team then turned to the AAPG, whose rigorous peer-review process — spanning three full rounds of review over nearly three years — ultimately yielded the published paper that now stands as a landmark in Myanmar petroleum geoscience.

Meanwhile, one of the main arguments of our paper is that the sands of the Block A-6 hosting the Pyitharyar Integrated Project (PIP) were brought there by an ancient arm of the Ayeyarwady-Chindwin River system, for at least five million years. This is until less than a million years ago, when tectonic movements redirected the course of this arm southwards, where it now flows. Is this vagrancy of a major river at such a vast scale a unique phenomenon in country? This is what this snippet is all about.

### What did L. Dudley-Stamp write about?

Prof. Laurence Dudley-Stamp started his teaching career at the tender age of 25 when he became in 1923 the first professor of geography and geology of the just newly born University of Rangoon as it

was spelt at the time. He graduated with honors in a BSc in geology from the prestigious King's College London in 1917, followed by a DSc in geography in 1920.



That he was a geologist turning into a geographer is telling indeed what geology is all about. In Dudley-Stamp's flowery language of the day in the above-mentioned paper: "No apology is tendered for attempting to consider the Tertiary geology of Burma from the point of view afforded by a reconstruction of the geography of the period." We call this branch of geology "paleogeography", the geography of ancient times.

Yet unknown to him at the times - the concept only became accepted throughout the world in the late 1960's - the continents, or continental plates as we like to see them, move around. They create oceans when they part away from each other, and mountain ranges while colliding frontally or just brushing or jostling against each other, as they do in Myanmar for the last 40 million years or so. What moves the continental plates is yet a mystery, convection currents within the magma underlying the plates are the most popular assumption, yet without definite evidence, a bit like convection currents in the atmosphere build up clouds that turn into thunderstorms.

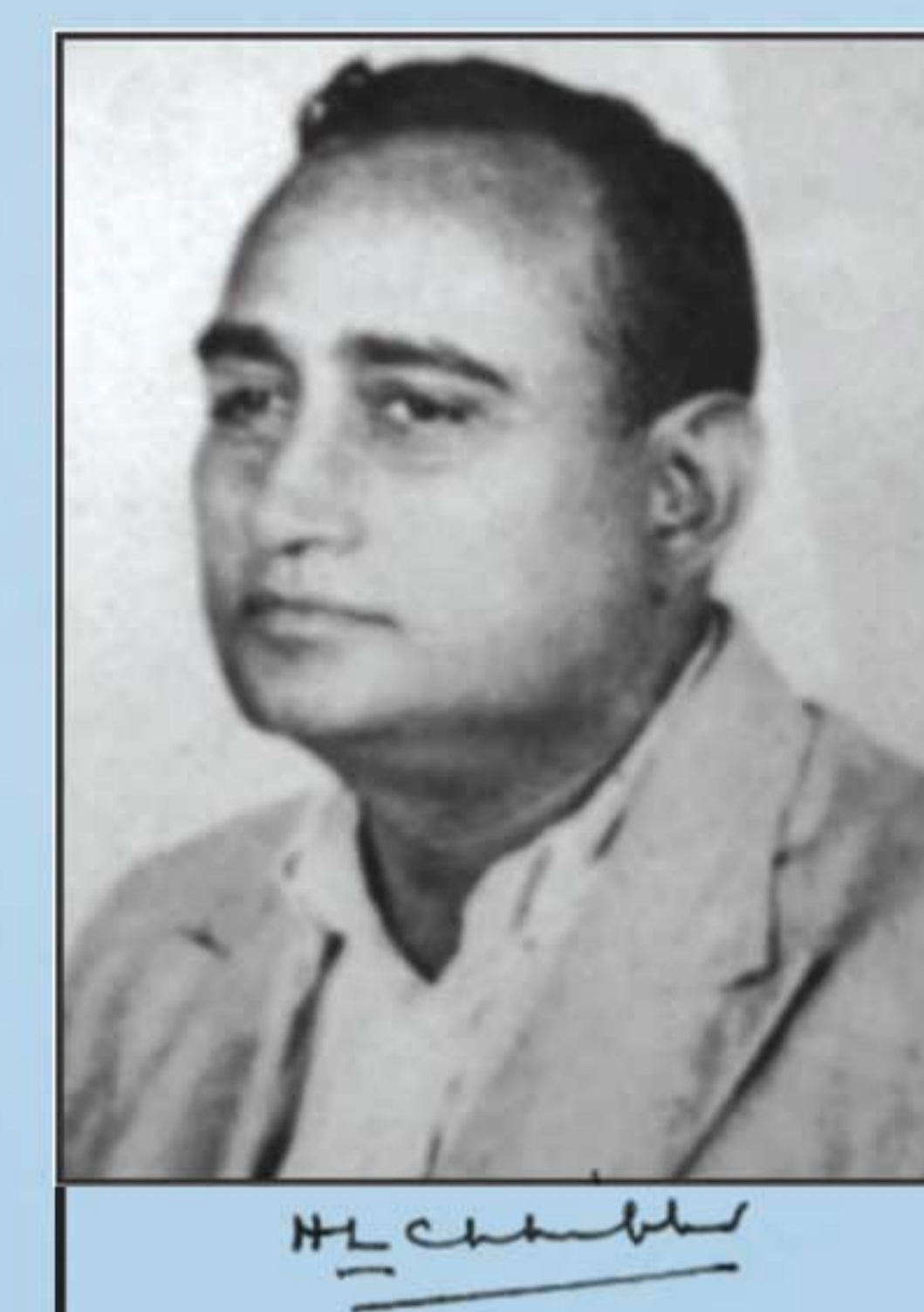
Yet Dudley-Stamp was the first to recognize that during the last 50 million years, Central Myanmar was very broadly an ancient gulf which filled with the sediments of the Ayeyarwady, Chindwin and Sitoung rivers progressively from North to South to where the shores between Cape Negrais and Kyaikto now extend (figure 1). Dudley-Stamp also recognised the major deformation phase that affected the whole region less than two million years ago.

Ironically enough, Dudley-Stamp's ideas were partly fed by a two-year stint at the Yomah Oil Company (1920) Ltd, a short-lived venture to look for oil in northern Burma, and which went bankrupt in

1922. Dudley-Stamp filled his tenure at the young Rangoon University until 1926, when he returned to England to become a renowned reader in economic geography at the London School of Economics. He grew older to be one of the top geographers of his time in UK. However, some of the data used for his seminal paper could only have come from his observations as a petroleum geologist.

### Another pioneer of paleo-geography: H.L. Chhibber or vagrant rivers shaping landscape

Yet we had to wait until 1934, when yet another professor of the geological department of the University of Rangoon, Harbans Lal Chhibber, wrote the first book covering the whole geology of Myanmar as "The Geology of Burma", nearly 600 pages. Such vast subject included all and any aspects of the geography and geology of Burma at the time. After more than ninety years, this book is still quoted in the references of papers on the matter of general geology of Myanmar.



H.L. Chhibber (born in 1899 in western Punjab - died in 1955 in Varanasi) of Indian ascent, succeeded L. Dudley-Stamp as the head of the Department of Geology and Geography of the University of Rangoon. He quit university in 1927 to join the Geological Survey of India in January 1928 as Assistant Superintendent, where his keen interest in the geology of Burma, then still part of the British-ruled Indian Empire, made him admitted to the famous Burma Circle.

H.L. Chhibber travelled extensively all over Burma from Mergui to Myitkyina and from the Shan States to the Akyab Province (now the Rakhine state), at a time when there was no road across the jungles of the Rakhine Yoma hills.

Chhibber's book on geology of Burma is organized into three parts. The first quarter is devoted to an account of the main geographical features of the country: mountains ranges, river systems, lakes,

hot springs, mud volcanoes, erosion features, limestone caves, coastlines, and a history of earthquakes. A second part is devoted to stratigraphy, the arrangement of rock layers through geological times. In the third part, for nearly half of the book, evidences of ancient volcanic activities are listed in relation to tectonics, the hiccups of the Earth's crust that shape mountain ranges. The book went through four editions, the last one as late as 1975. Our paper is unlikely to survive that long.

As envisioned by Chhibber, once upon a time, until a million years ago or less, the Ayeyarwady River flowed South of Mandalay through

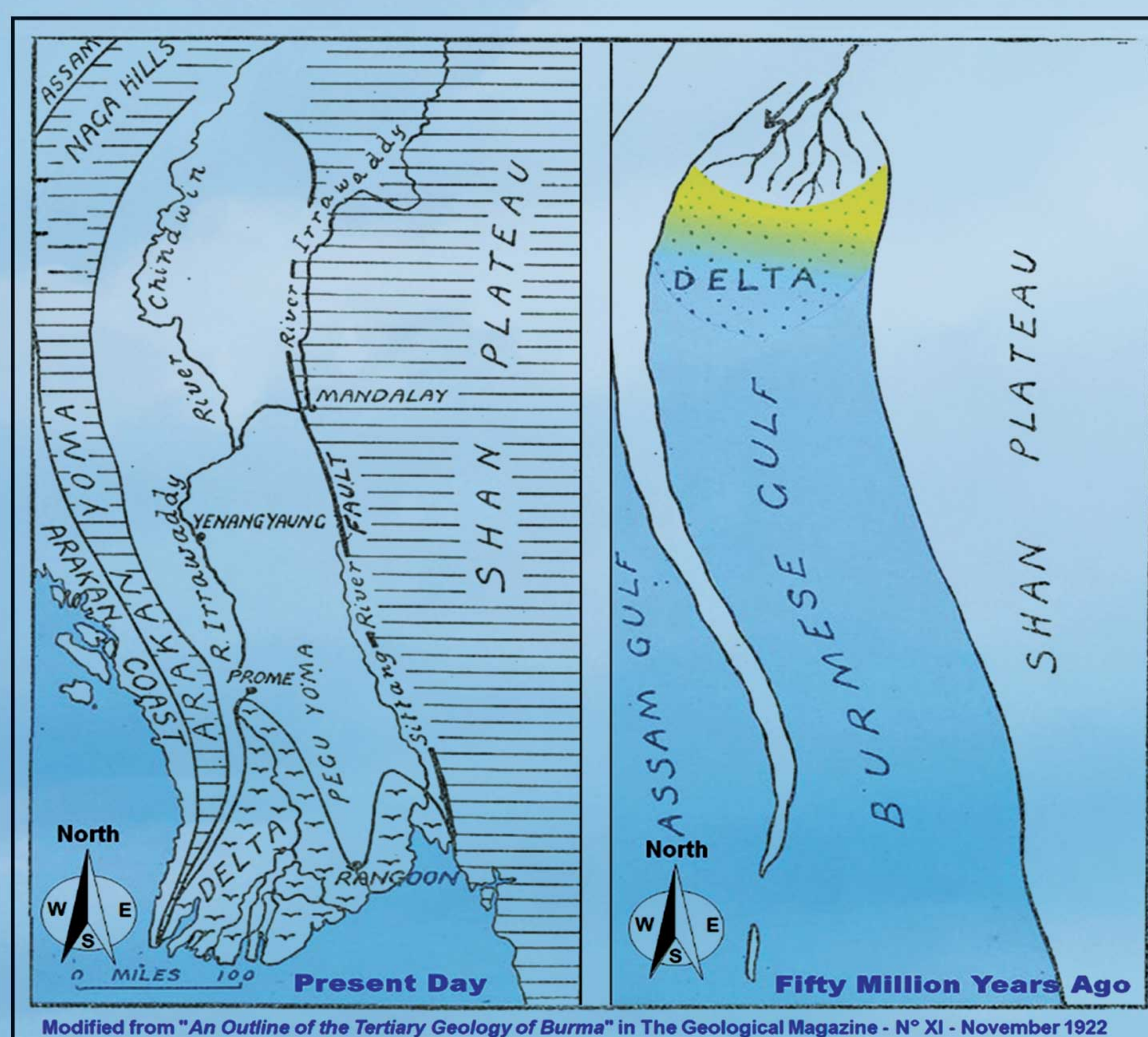


Figure 1: The "Burmese Gulf" now (to the left) and some 40 million years ago (to the right); colored from a figure of L. Dudley-Stamp's paper mentioned in the text

the Sittaung valley. At this time, the present lower course of the Ayeyarwady River, from Pakokku to downstream of Pathein, was run by the Chindwin River, which was then having its source in the Tibet via the Tsangpo River (figure 2).

The following is Chibber's words on the course of the Ayeyarwady River: "There is not a shadow of doubt that the Irrawaddy first flowed through the valley now occupied by the Sittang, which may then have been a tributary to the main river. The east-west movements which especially characterized the close of the Tertiary period, aided by the upheaval of the Pegu Yoma with its northern continuation, caused it to change its course, and cut its way through the gap between the soft rocks of the northern end of the Pegu Yoma and the hills north of the river.

Further on, Chibber writes on the Chindwin River: The Chindwin must at one time have occupied the present Lower Irrawaddy valley, which is in reality a continuation of the Chindwin valley. Shortly after this sentence, Chhibber writes: "There is strong evidence that the Sittang valley was once occupied by the Lower Irrawaddy before it changed its direction westwards. The present Sittang is really the old, be-headed Lower Irrawaddy."

Chibber describes therefore two mechanisms whereby rivers change courses:

- **Tectonic movements**, of which earthquakes are their most violent effects, changing the landform, and therefore the location of valleys where rivers flow and
- **River capture**, also known as "headward erosion", such as in the case of the Ayeyarwady River diverted West of Mandalay from its

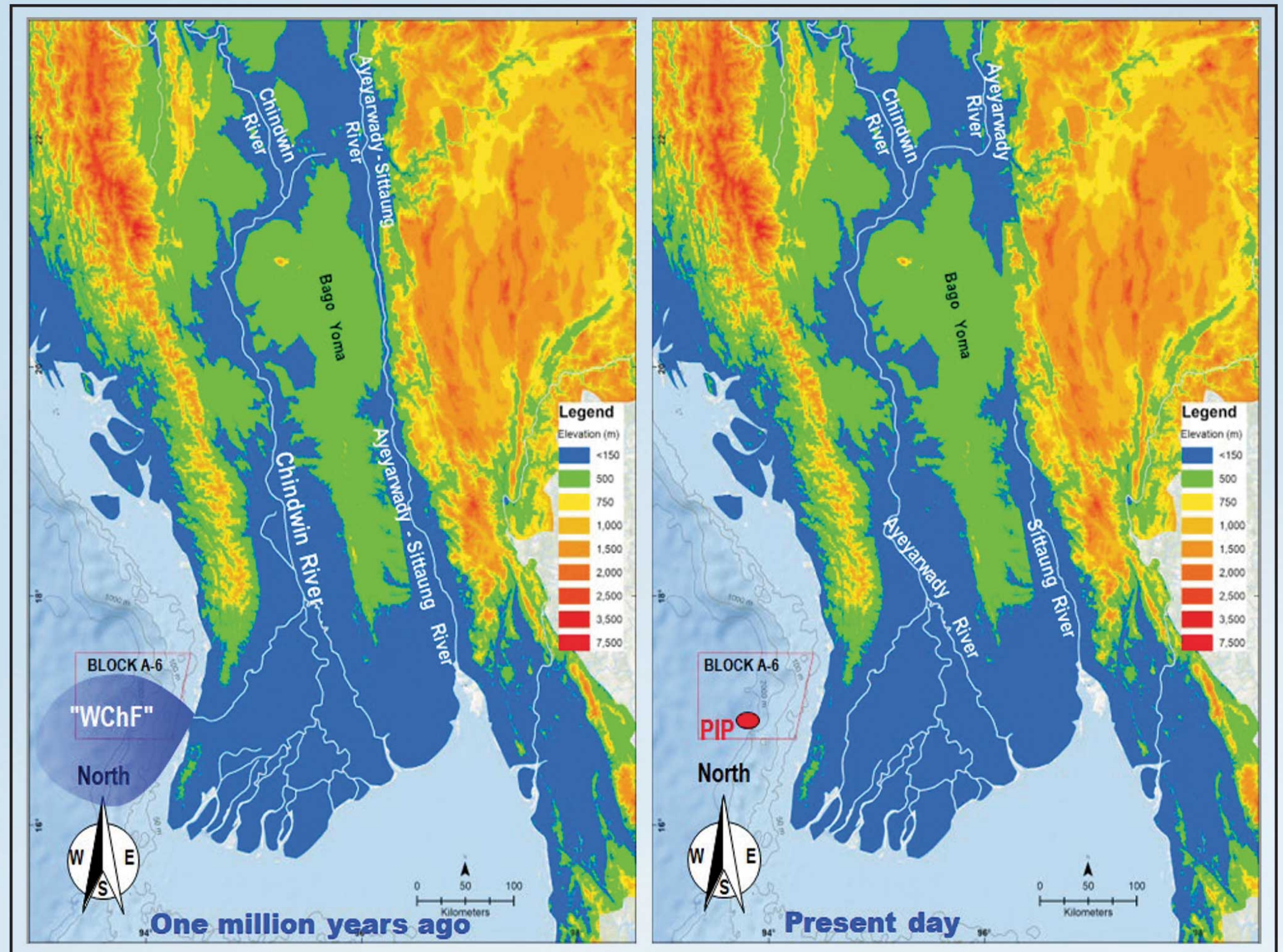


Figure 3: The courses of the Ayeyarwady, Chindwin and Sittaung rivers, a million years ago (left), and presently (right); "WChF" stands for the Western Chindwin Fan as the Ayeyarwady River was actually flowing in the Sittaung valley; PIP stands for Pyitharyar Integrated Project

initial southwards course, whereby a tributary of the Chindwin River eroded the landscape eastwards upstream of its course until it reached a point, now between Sagaing and Mandalay, where it captured the Ayeyarwady River (figure 3).

These two mechanisms can very well combine, at the same time or in sequence.

The sands of the Pyitharyar Integrated Project may have been poured in Block A-6 by the Chindwin River alone, while the Ayeyarwady River was flowing in the present valley of the Sittaung River.

Yet such assumption is only supported by geographical considerations, and such view is nowadays regarded by the geoscience community as "pure speculations". More facts are needed to transform - or discard - these speculations in solid science. One method, used in our paper, would be to determine the origin of the sands eroded by the two rivers, from special studies involving a class of minerals we call "heavy minerals", some of which are also gemstones, such as zircons or garnets. Meanwhile, our paper remains the authority in the matter: the Ayeyarwady-Chindwin River system fed the sands storing the gas of our Pyitharyar Integrated Project.

**A Final Word**

A more recent book on the "Geology of Burma" exists, it has been published in Germany at the expenses of the West German taxpayer in 1983. More than forty years after that book, isn't it now time for a team of Myanmar geologists to issue a third one, written with the most modern observations, concepts and insights, proudly edited in Myanmar by a team of Myanmar geologists, for the benefit of the Myanmar community? Isn't this first AAPG Bulletin paper written and drawn by a team of Myanmar geologists the evidence that it can be done? Possibly by a consortium of geological academic institutes across the country? Just another seed for thought. U P. Kyaw Myint would have enthusiastically nodded and be part of the team...

That's it for now folks! Just remain curious and the fun goes on! ■

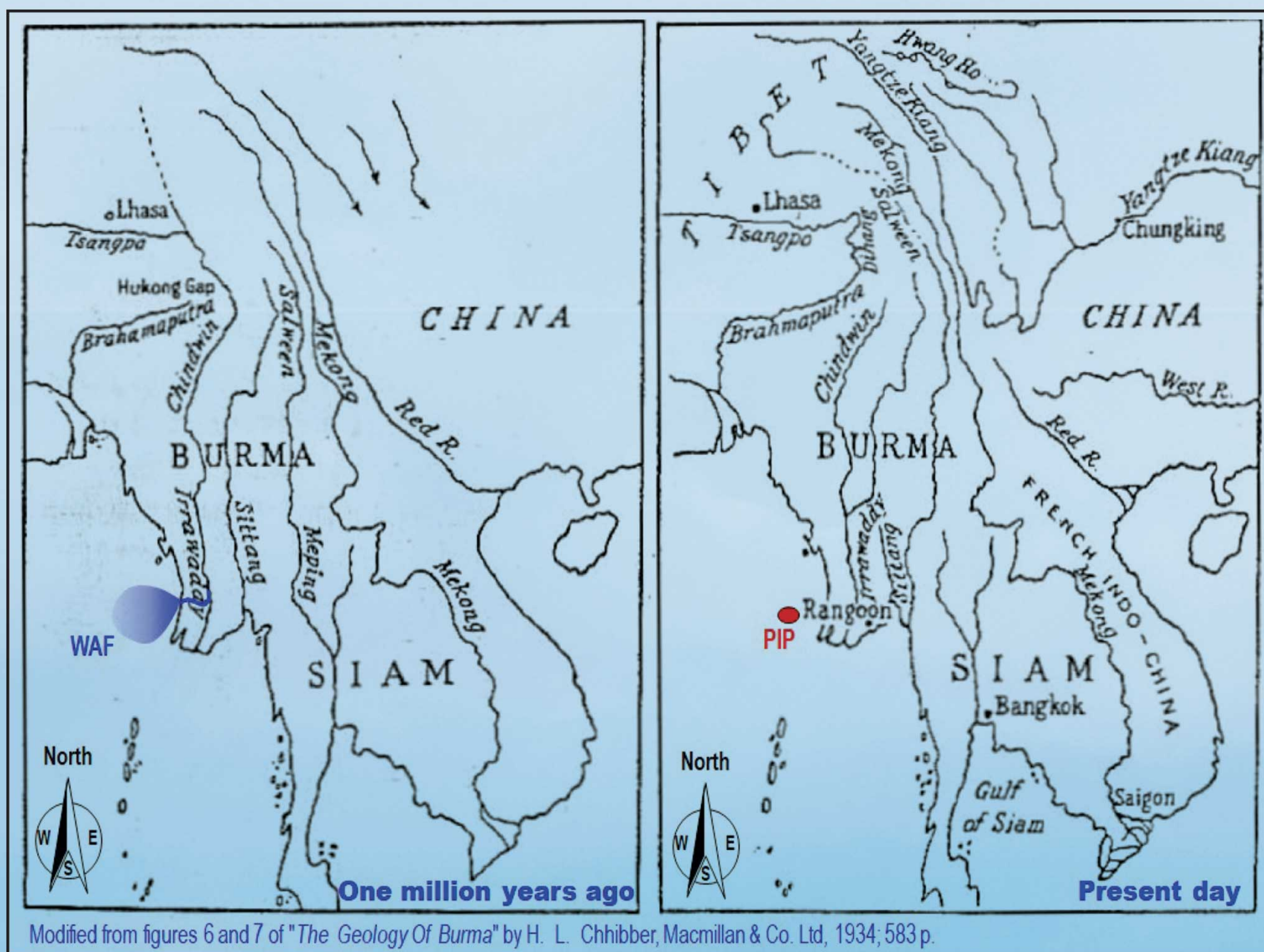


Figure 2: The courses of the rivers of South East Asia, a million years ago (left), at the present day (right) as seen by Chhibber in his "Geology of Burma" treatise; note on the lefthand map how the downstream course of the Chindwin River is somewhat confusingly called by Chhibber "Irrawaddy", while the upper course of the so-called "Sittang" River is actually the upper course of the Irrawaddy River (see Figure 3 for clearer picture). WAF stands for Western Ayeyarwady River Fan discovered by MPRL E&P geoscientists; PIP stands for "Pyitharyar Integrated Project"





# Turning Pages into Possibilities

Hnin Wynt Zaw



For three vibrant days in May, Gallery Ohmar transformed into a world of imagination, learning, and laughter as children, parents, educators, artists, and storytellers gathered for the Yangon Children's Book Fair 2026 — a community-centered initiative dedicated to nurturing literacy and creativity among Myanmar's younger generation.

Held from 01 to 03 May, the event was far more than a traditional book fair. It became a lively cultural experience where books came alive through storytelling, workshops, performances, art, and interactive learning activities designed to inspire curiosity, creativity, and connection among children of all backgrounds.

As part of the MPRL E&P Group of Companies' broader commitment to social welfare and community development, the event reflected a company culture that believes meaningful progress extends beyond business operations and into the lives of the communities it serves.

At the heart of this initiative is Gallery Ohmar — a project deeply rooted in compassion, creativity, and service. Inspired by the philanthropic vision of the late wife of the company's founder and CEO, Gallery Ohmar was established as a space that supports art, culture, education, and community engagement. Today, that vision continues through the leadership of her son, U Phone Kyaw Moe Myint, who has carried the initiative forward with renewed energy and dedication, expanding its role as a platform for meaningful social programs and youth-focused activities.



The Yangon Children's Book Fair marked one of Gallery Ohmar's largest community programs of the year, bringing together families, educators, artists, and organizations with a shared goal: encouraging children to discover the joy of reading while creating accessible learning opportunities for the wider public.

Built around the concepts of "The Living Library" and "The Story Stage," the fair encouraged children to interact with literature in immersive and imaginative ways. Storyteller corners, illustrator workshops, puppet-style performances, dramatic readings, and interactive sessions transformed books from static pages into engaging experiences that sparked creativity and curiosity.

The event also emphasized accessibility and inclusion by creating a welcoming environment where families from different socio-economic backgrounds could enjoy educational resources, storytelling sessions, and creative workshops together.



Across the venue, more than 30 featured booths showcased educational organizations, reading spaces, schools, environmental initiatives, and creative activity corners. Children explored painting stations, hands-on science demonstrations, coding workshops, robotics activities, comic illustration sessions, and live story readings led by educators, artists, and community contributors.

Day 1 of the fair featured a particularly special storytelling session led by U Phone Kyaw Moe Myint himself, together with well-known local celebrities Ye Lay and Bunny Phyo, alongside students from Empower Education. The interactive reading session brought stories to life through engaging narration, humor, and audience participation, creating an energetic and memorable experience for the children in attendance.



For many young participants, the opportunity to listen to familiar public figures reading alongside students in a warm and encouraging environment added an extra sense of excitement and connection to the event. More importantly, the session reflected one of the fair's core goals: making reading feel lively, accessible, and enjoyable for children of all backgrounds.

One of the most inspiring sights throughout the fair was the enthusiasm shared not only by children, but also by parents, volunteers, and educators who actively participated in the experience. The atmosphere reflected a growing collective appreciation for literacy, imagination, and lifelong learning.

A particularly meaningful highlight of the Yangon Children's Book Fair was the visit of honored guest Thanpuying Angkab Punyashthiti and family, whose presence brought additional significance to the event's mission of promoting literacy, education, and cultural appreciation. Recognized in Thailand for her longstanding contributions to education and institutional leadership, Thanpuying Angkab has played influential roles in educational administration and royal-linked educational initiatives, particularly through her association with Chitralada School and related learning institutions. Her visit reflected a shared appreciation

for youth development, learning, and community-centered initiatives.

During the visit, the Gallery Ohmar Team personally conducted a comprehensive VIP guided tour through the various exhibition zones, offering insights into the vision and purpose behind the Yangon Children's Book Fair. As a welcoming gesture, the family was presented with eco-friendly tote bags from Jacana Shop, reflecting the event's environmental awareness and community values.



The family was also guided through the fair's immersive "Living Library" experience and environmental-themed exhibition spaces, where the event's broader mission — fostering youth literacy while encouraging environmental consciousness — was showcased through interactive storytelling, educational activities, and creative displays.

One of the most encouraging moments for the organizing team came through the family's positive feedback on the transformation of Gallery Ohmar into a dedicated space for children's literature, Myanmar art, and creative learning. Their appreciation served as meaningful recognition of the effort invested in building a welcoming cultural environment where education, creativity, and community engagement can thrive together.



Despite the large crowds and overwhelming enthusiasm surrounding the storytelling sessions and featured artists, the spirit of the event remained overwhelmingly positive. According to organizers, the fair felt less like a conventional exhibition and more like a joyful community celebration centered around books, creativity, and shared experiences.

For MPRL E&P Group of Companies, initiatives such as the Yangon Children's Book Fair reflect a broader belief that investing in communities means investing in future generations. Whether

through education, creativity, culture, or social welfare, programs like these embody the values of compassion, inclusion, and long-term impact that continue to shape the company's culture today.

In a world increasingly driven by screens and distractions, the sight of children eagerly carrying books, gathering around storytellers, and discovering new ideas served as a meaningful reminder: sometimes, the simplest moments — turning a page, hearing a story, sharing imagination — can leave the most lasting impact. ■



# A Partnership Built on Trust and Reliability

Aung Myin

*How operational discipline, responsiveness, and trusted partnerships support critical digital infrastructure in Myanmar's banking sector.*

In today's rapidly evolving digital economy, operational resilience has become more than a technology priority, it is increasingly tied to institutional confidence and continuity.

For organizations operation in highly sensitive and fast-moving environments such as banking and finance, every second matters. Customers expect uninterrupted access to services, regulators demand stronger operational controls, and institutions must continuously balance innovation with stability. Behind these expectations lie a less visible but essential foundation: reliable infrastructure supported by disciplined operations and responsive teams.

For M&A Data Center, one of the most meaningful reflections of this responsibility has been the long-term partnership developed with Yoma Bank.

Since June 2023, Yoma Bank has partnered with M&A Data Center to support its Disaster Recovery (DR) infrastructure requirements. What began with an initial deployment of three racks has gradually expanded over time alongside the bank's growing operational demands and technology needs. Today, all four racks are fully utilized, reflecting not only the pace of digital transformation within Myanmar's banking sector, but also the importance of dependable local infrastructure in supporting business continuity.

More importantly, the partnership represents more than infrastructure growth alone. It reflects the importance of trust built steadily through consistency, responsiveness, and operational reliability during a period when resilience has become increasingly critical for institutions across the country.

For a leading financial institution such as Yoma Bank, infrastructure decisions are made with careful consideration. Stability, security, and continuity are essential not only to operations, but also to maintaining customer confidence. In this regard, M&A Data Center has had the privilege of supporting Yoma Bank's efforts to ensure uninterrupted banking services for millions of customers nationwide.

Reflecting on the partnership, U Htet Linn, Chief Information Officer of Yoma Bank, shared that M&A Data Center has become "a foundational component" of the bank's infrastructure strategy over the past three years.

"For a leading bank like Yoma, stability is non-negotiable. M&A Data Center has provided a resilient environment that allows us to maintain consistent service delivery to our customers, ensuring that our core banking operations remain secure and uninterrupted."

Beyond infrastructure, partnerships are ultimately built through people and responsiveness.

In high-stakes operational environments where downtime is simply not an option, the professionalism and responsiveness of technical teams often become just as important as the infrastructure



supporting them. According to U Htet Linn, the proactive support provided by M&A Data Center Network Operations Center (NOC) and technical support teams has been a particularly valuable aspect of the partnership.

"The NOC team and technical support at M&A Data Center have been exemplary. Their responsiveness is a key differentiator. They don't just react to issues but often provide the proactive monitoring necessary for high-stakes banking environments."

Over time, the partnership also reflected growing confidence in M&A Data Center's operational reliability and infrastructure environment. While the initial engagement focused primarily on Disaster Recovery systems, evolving operational requirements and the increasing importance of resilience led to deeper discussions surrounding the hosting of additional mission-critical equipment.

Another area recognized by Yoma Bank has been the physical and environmental security standards maintained by the M&A Data Center. In highly regulated sectors such as banking, operational resilience begins not only with digital systems, but also with disciplined physical infrastructure and security processes.

M&A Data Center's multi-layered security architecture, including its internally developed "8-layer security process," has been recognized as a key differentiator for institutions requiring strict operational controls. These standards continue to play an important role in supporting customer confidence and operational continuity.

The partnership has also reflected a broader shift taking place across Myanmar's financial sector. Increasingly, organizations are recognizing the importance of strengthening trusted local digital infrastructure capable of supporting highly secure, internationally aligned infrastructure environments within the country.

Yoma Bank's partnership has also contributed to growing confidence across the wider banking ecosystem. Following the onboarding of Yoma Bank, M&A Data Center began seeing increased interest from other major financial institutions, including CB Bank, ICBC Bank, Shwe Bank, and Bank of China. The presence of multiple financial institutions within M&A Data Center reflects the increasing importance of trusted local infrastructure in supporting operational continuity and Myanmar's evolving digital economy.

What makes partnerships like this especially meaningful is that they are built not only on service agreements, but on mutual trust developed over time through consistent performance, transparency, and shared responsibility.

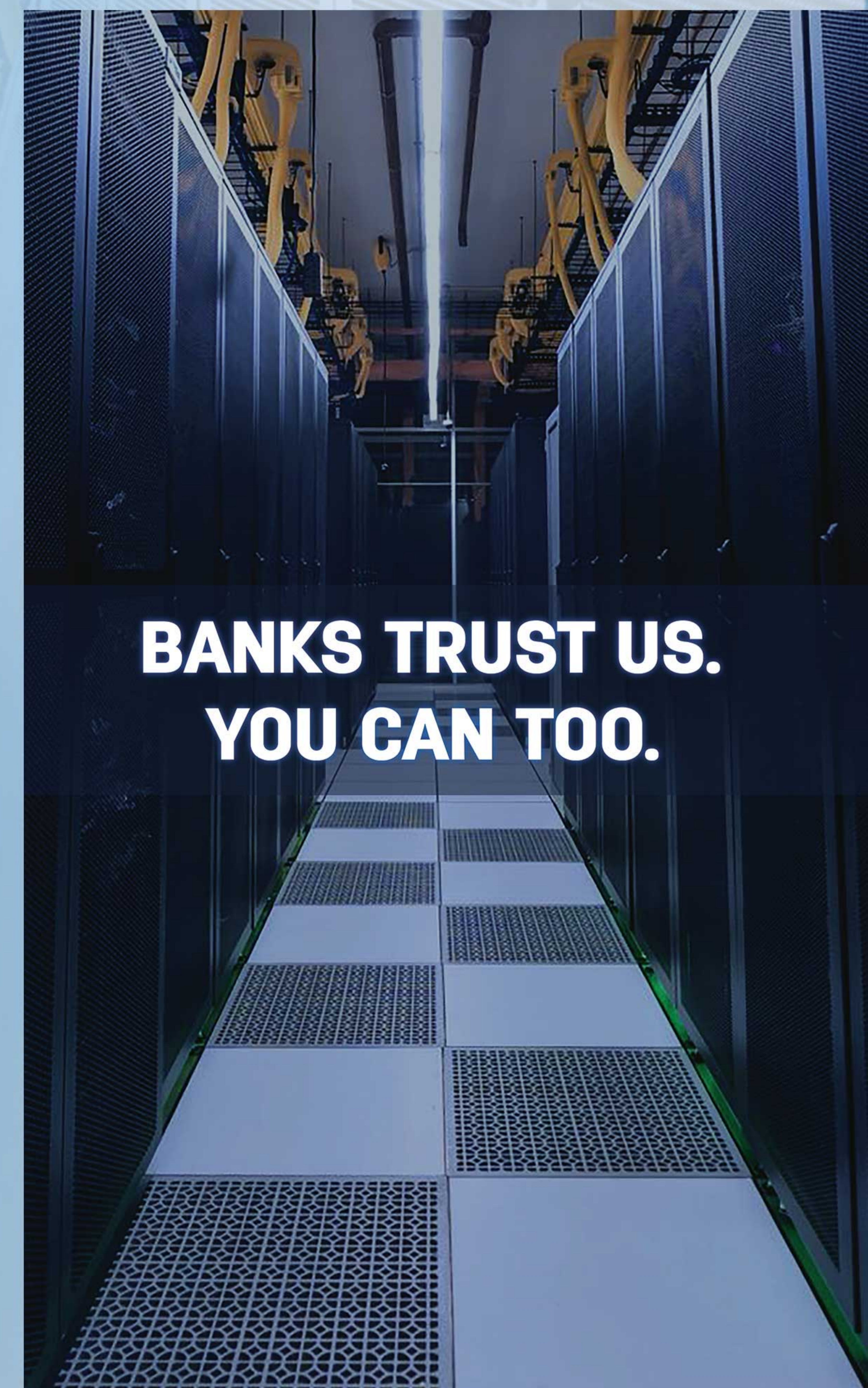
As U Htet Linn summarized:

"For any organization where downtime is not an option and security is the top priority, M&A Data Center is a reliable and proven partner."

At M&A Data Center, partnerships such as these continue to reinforce the importance of maintaining high operational standards, strengthening technical capabilities, and supporting the digital resilience that Myanmar's future economy and organizations increasingly depend upon every day.

In many ways, digital resilience is becoming part of national infrastructure.

And behind every resilient system is a partnership built on trust. ■



**BANKS TRUST US.  
YOU CAN TOO.**



# From Waste to Resource: M&AOSB Empowers Communities Through Sustainable Composting

Pyae Pyae Phyo

At M&AOSB, sustainability is more than a commitment — it is a shared responsibility that begins within the communities where the company operates. In line with this vision, M&AOSB’s CSR Program launched the “Community-Managed Compost Station Pilot Project” in Nanttharpu Village Tract in March 2026, marking an important step toward promoting environmentally responsible waste management and stronger community participation.

The initiative was designed to encourage sustainable management of organic waste while fostering long-term behavioral change in household waste separation practices. By combining environmental education, hands-on demonstrations and active community involvement, the project aims to empower villagers to turn everyday organic waste into a valuable local resource.

The first phase of the project was implemented on 26 March 2026 with the support of members from Trash Hero Gaw Yan Gyi. Together with the village community, the CSR Team carried out a series of awareness and preparation activities, including selecting participating households, conducting community discussions, distributing reusable waste collection bags and providing practical guidance on compostable materials.



Through these engagements, villagers learned that many common household and agricultural waste materials — such as fruit and vegetable scraps, eggshells, onion and garlic peels, leaves, grass, paper scraps and animal manure — can be transformed into nutrient-rich compost instead of being discarded or burned.

Beyond reducing waste, composting offers multiple environmental and social benefits. It helps improve soil health and water retention, reduces methane emissions caused by the anaerobic decomposition of organic waste in landfills, lowers dependency on chemical fertilizers and promotes a cleaner living environment. Most importantly, the project encourages collective responsibility and cooperation among community members.

Naw May Pale Htoo, CSR Officer of M&AOSB, said the project was inspired by the successful implementation of a similar initiative by MPRL E&P, a sister company of M&AOSB, in Mann Field.

“Since July 2025, MPRL E&P’s CSR Program has been implementing the Community-Managed Compost



Station Pilot Project in Mann Field Communities,” she said. “Inspired by the positive progress there, M&AOSB has now introduced the project in its own operational area as well.”

She added that composting initiatives can be adapted to different regions depending on the types of locally available organic waste materials.

“As M&AOSB’s project area is a coastal region, coconut shells and coconut leaves are naturally abundant here,” she said. “By observing this pilot project model, local residents can also create small-scale compost pits at their own homes using recyclable organic waste generated from their households. In doing so, they can manage waste more effectively, contribute to a cleaner environment and, at the same time, produce natural fertilizer for agricultural purposes. This can help reduce the cost of purchasing compost and support more sustainable crop cultivation.”



To prepare for the official composting activities, M&AOSB’s CSR Team and Trash Hero volunteers conducted door-to-door awareness campaigns ahead of the project launch. Residents were encouraged to begin collecting compostable waste materials at home in advance of the live demonstration scheduled for April.

On 26 April 2026, the CSR Team organized a practical composting demonstration at Zin Yaw Chaung Ward in Nanttharpu Village Tract. A total of 28 participants, including children and adults, attended the activity



with enthusiasm and curiosity. During the session, participants were guided step-by-step through the compost-making process, including waste separation methods, layering techniques, moisture management and compost pile maintenance.

Working alongside Trash Hero Gaw Yan Gyi members, the CSR Team also demonstrated how to construct compost pit and properly arrange “brown” carbon-rich materials and “green” nitrogen-rich materials to support natural decomposition. The demonstration created a hands-on learning experience that encouraged villagers to participate actively and confidently.

As part of the pilot initiative, additional door-to-door awareness activities were conducted for 10 households in Zin Yaw Chaung Ward on 29 April 2026 to further strengthen community engagement and understanding of the project.

By May 2026, early signs of progress were already visible. Several households had begun bringing kitchen waste and other compostable materials to the community compost station, reflecting growing awareness and participation among residents.

While still in its early stages, the Community-Managed Compost Station Pilot Project demonstrates how small, community-led actions can contribute to meaningful environmental change. Through collaboration, education and local participation, M&AOSB continues to support practical sustainability initiatives that create long-term value for both communities and the environment. ■

# Myanmar Thingyan New Year Celebration Held at Vantage Tower in April 2026



# MPRL E&P GoC Staff Continue Lifesaving Tradition With 20th Blood Donation



# Myanmar National Open Sailing Championship 2026 Prize Awards Ceremony & Dinner



# Summer Sea Training Camp 2026 Strengthens Skills and Sailing Excellence

Thal Sandy Tun



The Summer Sea Training Camp 2026 was successfully held from 26 March to 11 April 2026 at Ngwe Saung Yacht Club & Resort in Ngwe Saung, Ayeyarwady Region. Organized under the guidance of the Vice President (4) of the Myanmar Yachting Federation, the camp was a collaborative effort between the Yangon Sailing Club, the Optimist Dinghy Association of Myanmar and Ngwe Saung Yacht Club & Resort.

A dedicated organizing team led the camp, with U Sai Pyae Sone Hein serving as Camp Commandant and U Aung Myin Thu as head coach for the Optimist A Group. The team included experienced coaches, assistant coaches, a medical officer, logistics coordinators, and support staff who worked collectively to ensure a safe, structured, and effective training environment for all participants.



Preparations for the camp began as early as January 2026, covering budgeting, approvals, and trainee selection. Boat packing and logistical arrangements commenced on 14 March, followed by the departure of the initial transport team on 23 March. The main training group departed from Yangon Sailing Club on 26 March and arrived at the training venue later that morning.

The camp brought together a total of 68 participants, including 43 trainees from the ILCA classes and Optimist classes, along with 25 coaches and support personnel. The ILCA classes refer to single-handed dinghy boats sailed worldwide, known for their simplicity, strict standardization and emphasis on sailor skill rather than equipment advantage. These include ILCA 4 and ILCA 6 categories, which are widely used for youth and developing competitive sailors.

Training sessions ran from 27 March to 5 April, focusing on both foundational and advanced sailing skills.

This was followed by the Myanmar National Optimist Sailing Championship, together with the ILCA 4 and ILCA 6 Open Sailing Championships 2026, held from 06 to 09 April, providing sailors with valuable competitive experience.

Throughout the camp, participants benefited from visits by leadership from the Myanmar Yachting Federation, including the President and Vice Presidents, who engaged with trainees and documented the event. Financially, 70% of the training costs were covered by participants, while the Federation contributed the remaining 30%.

The Federation also extended additional support to 21 individuals, including 19 athletes from the Institute of Sports and Physical Education and two trainees who are children of the Federation coaches. In recognition of performance and to encourage excellence, the Federation subsidized training fees for top performers from the 2025 Yangon Sailing Club Combined Fleet Championship. Sailors placing first to fifth received 75% support, while those ranking sixth to tenth were granted 50% support.

Participation in the Myanmar National Optimist Sailing Championship in April will also serve as part of the selection process for the upcoming Myanmar National Sailing Team 2026, which will compete in regional and international regattas and championships.

Royal D Myanmar supported the camp as the in-kind sponsor and hydration partner, providing 720 bottles to ensure proper hydration for all attendees. Additionally, the Summer Sea Training Camp 2026 organizing team, together with members of the ILCA adult sailors group from Yangon Sailing Club, recognized the support team — including five employees from Yangon Sailing Club, one staff from the

Michael's Day Out yacht management team and surfers from the Surfing Association of Myanmar — with cash rewards for their valuable contributions.

The camp concluded with a closing celebration at Food Lover Restaurant, where participants enjoyed a seafood buffet dinner, marking the end of an intensive and rewarding experience. The group departed Ngwe Saung on 11 April and safely returned to Yangon Sailing Club later that afternoon.

Summer Sea Training Camp 2026 successfully achieved its core objectives of fostering independence, confidence, and teamwork among sailors. The program emphasized physical fitness, time management, and technical sailing skills such as boat handling, balance, pumping, and surfing. For competitive sailors, advanced training in race strategy, tactics, and start control was provided. Importantly, participants developed the endurance and resilience required to train and compete on the water for extended periods.

Overall, the Summer Sea Training Camp 2026 stands as a significant milestone in nurturing the next generation of competitive sailors in Myanmar, strengthening both their technical capabilities and personal development. ■

